

## CONSOLIDATED TEST RESULTS SUMMARY

Please see the following pages for full test results.

<b>BULK SKU</b> SG25	<b>BATCH #</b> EC01(A)	<b>LOQ:</b> Limit Of Quantitation <b>LOD:</b> Limit Of Detection  1 g = 10 <sup>-3</sup> kg = 10 <sup>3</sup> mg = 10 <sup>6</sup> µg 1 mg/kg = 1 ppm = 1000 ppb
<b>PRODUCT NAME</b> CBD Softgels - 25 mg	<b>SERVING SIZE</b> 2 Softgels	
<b>LABORATORY:</b> Coubia Laboratories	<b>OREGON ACCREDITATION:</b> OR100028	

POTENCY	PER SERVING	PER GRAM	Percent
Cannabidiol (CBD)	56.4 mg/serving	70.5 mg/g	7.05 %
Total THC (d9-THC, THCA)	0.791 mg/serving	0.989 mg/g	0.0989 %
Cannabigerol (CBG)	0.354 mg/serving	0.442 mg/g	0.0442 %
Cannabinol (CBN)	<LOQ mg/serving	<LOQ mg/g	<LOQ %
Cannabichromene (CBC)	0.727 mg/serving	0.909 mg/g	0.0909 %
Tetrahydrocannabinolic Acid (THCA)	<LOQ mg/serving	<LOQ mg/g	<LOQ %
Delta-9-THC (d9-THC)	0.791 mg/serving	0.989 mg/g	0.0989 %
Delta-8-THC (d8-THC)	<LOQ mg/serving	<LOQ mg/g	<LOQ %

HEAVY METALS	PER SERVING	PER GRAM	REGULATORY ACTION LEVEL
Arsenic	<LOQ µg/serving	<LOQ µg/g	10 µg/day <sup>[1]</sup>
Cadmium	<LOQ µg/serving	<LOQ µg/g	4.1 µg/day <sup>[1]</sup>
Lead	<LOQ µg/serving	<LOQ µg/g	3.5 µg/day <sup>[2]</sup>
Mercury	<LOQ µg/serving	<LOQ µg/g	2 µg/day <sup>[1]</sup>

PESTICIDES	REGULATORY ACTION LEVEL
None of the other 59 pesticides tested found above limit of detection in the sample.	10 ppb <sup>[1]</sup>

RESIDUAL SOLVENTS	Results	REGULATORY ACTION LEVEL
Ethanol	<LOQ	50,000 mg/day
Heptane	<LOQ	50,000 mg/day
None of the 34 residual solvents tested found above limit of quantitation in the sample.		

MICROBIAL	PASS/FAIL
Yeast & Mold	Pass
Coliform	Pass

TERPENES	% OF SAMPLE
Farnesene	<LOQ %
β-Caryophyllene	1.02 %
α-Bisabolol	0.0442 %
Guaiol	<LOQ %
Humulene	0.0578 %
Caryophyllene Oxide	<LOQ %



1. American Herbal Pharmacopoeia. (2014). Cannabis Inflorescence: Standards of Identity, Analysis, and Quality Control. Washington DC: AHP.

2. US Food and Drug Administration. (2019). Lead in Food, Foodwares, and Dietary Supplements. Washington DC: FDA. US Food and Drug Administration. (2019). Lead in Food, Foodwares, and Dietary Supplements. Washington DC: FDA.



12423 NE Whitaker Way  
Portland, OR 97230  
503-254-1794



**Report Number:** 22-003104/D002.R002  
**Report Date:** 04/01/2022  
**ORELAP#:** OR100028  
**Purchase Order:**  
**Received:** 03/17/22 14:20

This is an amended version of report# 22-003104/D002.R001.  
Reason: Report includes additional testing.

**Customer:** Etz Hayim Holdings  
**Product identity:** EC01(A)-SG25  
**Client/Metric ID:** .  
**Laboratory ID:** 22-003104-0001

### Summary

#### Potency:

Analyte per 1g	Result	Limits	Units	Status	
CBC per 1g†	0.909		mg/1g		CBD Total per 1g 70.5 mg/1g
CBD per 1g	70.5		mg/1g		
CBDV per 1g†	0.304		mg/1g		THC-Total per 1g 0.989 mg/1g
CBG per 1g†	0.442		mg/1g		
CBT per 1g†	0.962		mg/1g		(Reported in milligrams per serving)
Δ9 THC per 1g	0.989		mg/1g		

#### Residual Solvents:

All analytes passing and less than LOQ.

#### Pesticides:

All analytes passing and less than LOQ.

#### Terpenes:

Analyte	Percent by weight	Percent of Total	Analyte	Percent by weight	Percent of Total
(R)-(+)-Limonene†	5.41	60.85%	β-Myrcene†	2.33	26.21%
β-Caryophyllene†	1.02	11.47%	Humulene†	0.0578	0.65%
α-Bisabolol†	0.0442	0.50%	d-3-Carene†	0.0261	0.29%
<b>Total Terpenes†</b>	<b>8.89</b>	<b>100.00%</b>			

#### Metals:

Less than LOQ for all analytes.



12423 NE Whitaker Way  
 Portland, OR 97230  
 503-254-1794

**Report Number:** 22-003104/D002.R002  
**Report Date:** 04/01/2022  
**ORELAP#:** OR100028  
**Purchase Order:**  
**Received:** 03/17/22 14:20



**Customer:** Etz Hayim Holdings  
 16427 NE Airport Way  
 PORTLAND 97230  
 United States of America (USA)

**Product identity:** EC01(A)-SG25

**Client/Metric ID:** .

**Sample Date:**

**Laboratory ID:** 22-003104-0001

**Evidence of Cooling:** No

**Temp:** 20.8 °C

**Relinquished by:** Client

**Serving Size #1:** 1 g

**Density:** 0.9270 g/ml

### Sample Results

Potency per 1g						Method J AOAC 2015 V98-6 (mod)Units mg/se						Batch: 2202413		Analyze: 3/21/22 10:58:00 AM	
Analyte	Result	Limits	Units	LOQ	Notes										
CBC per 1g†	0.909		mg/1g	0.0331											
CBC-A per 1g†	< LOQ		mg/1g	0.0307											
CBC-Total per 1g†	0.909		mg/1g	0.0621											
CBD per 1g	70.5		mg/1g	0.331											
CBD-A per 1g	< LOQ		mg/1g	0.0307											
CBD-Total per 1g	70.5		mg/1g	0.360											
CBDV per 1g†	0.304		mg/1g	0.0331											
CBDV-A per 1g†	< LOQ		mg/1g	0.0307											
CBDV-Total per 1g†	0.304		mg/1g	0.0618											
CBE per 1g†	< LOQ		mg/1g	0.0307											
CBG per 1g†	0.442		mg/1g	0.0331											
CBG-A per 1g†	< LOQ		mg/1g	0.0307											
CBG-Total per 1g†	0.442		mg/1g	0.0618											
CBL per 1g†	< LOQ		mg/1g	0.0307											
CBL-A per 1g†	< LOQ		mg/1g	0.0307											
CBL-Total per 1g†	< LOQ		mg/1g	0.0576											
CBN per 1g	< LOQ		mg/1g	0.0307											
CBT per 1g†	0.962		mg/1g	0.331											
Δ8-THCV per 1g†	< LOQ		mg/1g	0.0307											
Δ8-THC per 1g†	< LOQ		mg/1g	0.0307											
Δ9-THC per 1g	0.989		mg/1g	0.0331											
exo-THC per 1g†	< LOQ		mg/1g	0.0307											
THC-A per 1g	< LOQ		mg/1g	0.0307											
THC-Total per 1g	0.989		mg/1g	0.0621											
THCV per 1g†	< LOQ		mg/1g	0.0307											
THCV-A per 1g†	< LOQ		mg/1g	0.0307											
THCV-Total per 1g†	< LOQ		mg/1g	0.0576											
Total Cannabinoids per 1g	74.1		mg/1g												



12423 NE Whitaker Way  
 Portland, OR 97230  
 503-254-1794



**Report Number:** 22-003104/D002.R002  
**Report Date:** 04/01/2022  
**ORELAP#:** OR100028  
**Purchase Order:**  
**Received:** 03/17/22 14:20

Solvents						Residual Solvents by GC/MS							
Method	Result	Limits	LOQ	Status	Notes	Units $\mu\text{g/g}$	Batch	Analyze	Result	Limits	LOQ	Status	Notes
	< LOQ	380	100	pass		2-Butanol	2202772	03/31/22 11:46 AM	< LOQ	5000	200	pass	
	< LOQ	160	30.0	pass		2-Methylbutane (Isopentane)			< LOQ		200		
	< LOQ		30.0			2-Propanol (IPA)			< LOQ	5000	200	pass	
	< LOQ		30.0			2,2-Dimethylpropane (neo-pentane)			< LOQ		200		
	< LOQ		30.0			3-Methylpentane			< LOQ		30.0		
	< LOQ	5000	200	pass		Acetonitrile			< LOQ	410	100	pass	
	< LOQ	2.00	1.00	pass		Butanes (sum)			< LOQ	5000	400	pass	
	< LOQ	3880	200	pass		Ethyl acetate			< LOQ	5000	200	pass	
	< LOQ		200			Ethyl ether			< LOQ	5000	200	pass	
	< LOQ	620	200	pass		Ethylene oxide			< LOQ	50.0	20.0	pass	
	< LOQ	290	150	pass		Isopropyl acetate			< LOQ	5000	200	pass	
	< LOQ	70.0	30.0	pass		m,p-Xylene			< LOQ		200		
	< LOQ	3000	200	pass		Methylene chloride			< LOQ	600	60.0	pass	
	< LOQ		200			n-Butane			< LOQ		200		
	< LOQ	5000	200	pass		n-Hexane			< LOQ		30.0		
	< LOQ		200			o-Xylene			< LOQ		200		
	< LOQ	5000	600	pass		Propane			< LOQ	5000	200	pass	
	< LOQ	720	100	pass		Toluene			< LOQ	890	100	pass	
	< LOQ		400			Total Xylenes and Ethyl benzene			< LOQ	2170	600	pass	



12423 NE Whitaker Way  
 Portland, OR 97230  
 503-254-1794



**Report Number:** 22-003104/D002.R002  
**Report Date:** 04/01/2022  
**ORELAP#:** OR100028  
**Purchase Order:**  
**Received:** 03/17/22 14:20

Pesticides											
Method AOAC 2007.01 & EN 15662 (mod) Units mg/kg Batch 2202765 Analyze 03/31/22 09:25 AM											
Analyte	Result	Limits	LOQ	Status	Notes	Analyte	Result	Limits	LOQ	Status	Notes
Abamectin	< LOQ	0.50	0.250	pass		Acephate	< LOQ	0.40	0.250	pass	
Acequinocyl	< LOQ	2.0	1.00	pass		Acetamiprid	< LOQ	0.20	0.100	pass	
Aldicarb	< LOQ	0.40	0.200	pass		Azoxystrobin	< LOQ	0.20	0.100	pass	
Bifenazate	< LOQ	0.20	0.100	pass		Bifenthrin	< LOQ	0.20	0.100	pass	
Boscalid	< LOQ	0.40	0.200	pass		Carbaryl	< LOQ	0.20	0.100	pass	
Carbofuran	< LOQ	0.20	0.100	pass		Chlorantraniliprole	< LOQ	0.20	0.100	pass	
Chlorfenapyr	< LOQ	1.0	0.500	pass		Chlorpyrifos	< LOQ	0.20	0.100	pass	
Clofentezine	< LOQ	0.20	0.100	pass		Cyfluthrin	< LOQ	1.0	0.500	pass	
Cypermethrin	< LOQ	1.0	0.500	pass		Daminozide	< LOQ	1.0	0.500	pass	
Diazinon	< LOQ	0.20	0.100	pass		Dichlorvos	< LOQ	1.0	0.500	pass	
Dimethoate	< LOQ	0.20	0.100	pass		Ethoprophos	< LOQ	0.20	0.100	pass	
Etofenprox	< LOQ	0.40	0.200	pass		Etoxazole	< LOQ	0.20	0.100	pass	
Fenoxycarb	< LOQ	0.20	0.100	pass		Fenpyroximate	< LOQ	0.40	0.200	pass	
Fipronil	< LOQ	0.40	0.200	pass		Fonicamid	< LOQ	1.0	0.400	pass	
Fludioxonil	< LOQ	0.40	0.200	pass		Hexythiazox	< LOQ	1.0	0.400	pass	
Imazalil	< LOQ	0.20	0.100	pass		Imidacloprid	< LOQ	0.40	0.200	pass	
Kresoxim-methyl	< LOQ	0.40	0.200	pass		Malathion	< LOQ	0.20	0.100	pass	
Metalaxyl	< LOQ	0.20	0.100	pass		Methiocarb	< LOQ	0.20	0.100	pass	
Methomyl	< LOQ	0.40	0.200	pass		MGK-264	< LOQ	0.20	0.100	pass	
Myclobutanil	< LOQ	0.20	0.100	pass		Naled	< LOQ	0.50	0.250	pass	
Oxamyl	< LOQ	1.0	0.500	pass		Paclobutrazole	< LOQ	0.40	0.200	pass	
Parathion-Methyl	< LOQ	0.20	0.200	pass		Permethrin	< LOQ	0.20	0.100	pass	
Phosmet	< LOQ	0.20	0.100	pass		Piperonyl butoxide	< LOQ	2.0	1.00	pass	
Prallethrin	< LOQ	0.20	0.200	pass		Propiconazole	< LOQ	0.40	0.200	pass	
Propoxur	< LOQ	0.20	0.100	pass		Pyrethrin I (total)	< LOQ	1.0	0.500	pass	
Pyridaben	< LOQ	0.20	0.100	pass		Spinosad	< LOQ	0.20	0.100	pass	
Spiromesifen	< LOQ	0.20	0.100	pass		Spirotetramat	< LOQ	0.20	0.100	pass	
Spiroxamine	< LOQ	0.40	0.200	pass		Tebuconazole	< LOQ	0.40	0.200	pass	
Thiacloprid	< LOQ	0.20	0.100	pass		Thiamethoxam	< LOQ	0.20	0.100	pass	
Trifloxystrobin	< LOQ	0.20	0.100	pass							

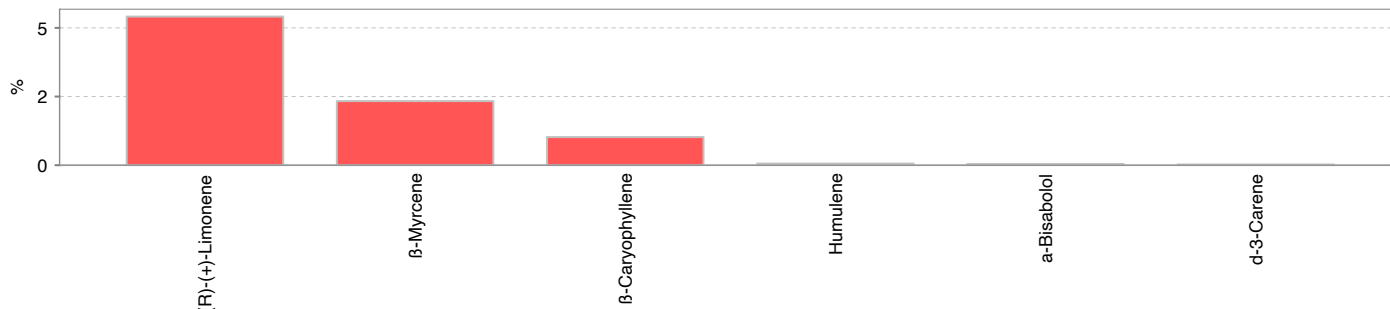


12423 NE Whitaker Way  
Portland, OR 97230  
503-254-1794

**Report Number:** 22-003104/D002.R002  
**Report Date:** 04/01/2022  
**ORELAP#:** OR100028  
**Purchase Order:**  
**Received:** 03/17/22 14:20



Terpenes				Method J AOAC 2015 V98-6	Units %	Batch 2202746	Analyze 03/30/22 09:58 AM		
Analyte	Result	LOQ	% of Total	Notes	Analyte	Result	LOQ	% of Total	Notes
(R)-(+)-Limonene <sup>†</sup>	5.41	0.195	60.85%		β-Myrcene <sup>†</sup>	2.33	0.019	26.21%	
β-Caryophyllene <sup>†</sup>	1.02	0.019	11.47%		Humulene <sup>†</sup>	0.0578	0.019	0.6502%	
α-Bisabolol <sup>†</sup>	0.0442	0.019	0.4972%		d-3-Carene <sup>†</sup>	0.0261	0.019	0.2936%	
(-)-caryophyllene oxide <sup>†</sup>	< LOQ	0.019	0.00%		Geranyl acetate <sup>†</sup>	< LOQ	0.019	0.00%	
farnesene <sup>†</sup>	< LOQ	0.019	0.00%		Geraniol <sup>†</sup>	< LOQ	0.019	0.00%	
nerol <sup>†</sup>	< LOQ	0.019	0.00%		p-Cymene <sup>†</sup>	< LOQ	0.019	0.00%	
α-Terpinene <sup>†</sup>	< LOQ	0.019	0.00%		(-)-α-Terpineol <sup>†</sup>	< LOQ	0.019	0.00%	
Menthol <sup>†</sup>	< LOQ	0.019	0.00%		(+)-Pulegone <sup>†</sup>	< LOQ	0.019	0.00%	
(±)-Camphor <sup>†</sup>	< LOQ	0.019	0.00%		(-)-Guaiol <sup>†</sup>	< LOQ	0.019	0.00%	
Sabinene <sup>†</sup>	< LOQ	0.019	0.00%		(-)-Isopulegol <sup>†</sup>	< LOQ	0.019	0.00%	
(+)-Cedrol <sup>†</sup>	< LOQ	0.019	0.00%		Sabinene hydrate <sup>†</sup>	< LOQ	0.019	0.00%	
(+)-fenchol <sup>†</sup>	< LOQ	0.019	0.00%		(-)-β-Pinene <sup>†</sup>	< LOQ	0.019	0.00%	
(±)-trans-Nerolidol <sup>†</sup>	< LOQ	0.019	0.00%		(±)-cis-Nerolidol <sup>†</sup>	< LOQ	0.019	0.00%	
(+)-Borneol <sup>†</sup>	< LOQ	0.019	0.00%		(±)-fenchone <sup>†</sup>	< LOQ	0.019	0.00%	
α-cedrene <sup>†</sup>	< LOQ	0.019	0.00%		α-phellandrene <sup>†</sup>	< LOQ	0.019	0.00%	
α-pinene <sup>†</sup>	< LOQ	0.019	0.00%		Camphene <sup>†</sup>	< LOQ	0.019	0.00%	
cis-β-Ocimene <sup>†</sup>	< LOQ	0.006	0.00%		Eucalyptol <sup>†</sup>	< LOQ	0.019	0.00%	
γ-Terpinene <sup>†</sup>	< LOQ	0.019	0.00%		Isoborneol <sup>†</sup>	< LOQ	0.019	0.00%	
Linalool <sup>†</sup>	< LOQ	0.019	0.00%		Terpinolene <sup>†</sup>	< LOQ	0.019	0.00%	
trans-β-Ocimene <sup>†</sup>	< LOQ	0.013	0.00%		valencene <sup>†</sup>	< LOQ	0.019	0.00%	
<b>Total Terpenes</b>	<b>8.89</b>								



Metals									
Analyte	Result	Limits	Units	LOQ	Batch	Analyze	Method	Status	Notes
Arsenic	< LOQ	0.200	mg/kg	0.0965	2202780	03/31/22	AOAC 2013.06 (mod.)	pass	X
Cadmium	< LOQ	0.200	mg/kg	0.0965	2202780	03/31/22	AOAC 2013.06 (mod.)	pass	X
Lead	< LOQ	0.500	mg/kg	0.0965	2202780	03/31/22	AOAC 2013.06 (mod.)	pass	X
Mercury	< LOQ	0.100	mg/kg	0.0482	2202780	03/31/22	AOAC 2013.06 (mod.)	pass	X



12423 NE Whitaker Way  
Portland, OR 97230  
503-254-1794



**Report Number:** 22-003104/D002.R002  
**Report Date:** 04/01/2022  
**ORELAP#:** OR100028  
**Purchase Order:**  
**Received:** 03/17/22 14:20

These test results are representative of the individual sample selected and submitted by the client.

**Abbreviations**

**Limits:** Action Levels per OAR-333-007-0400, OAR-333-007-0210, OAR-333-007-0220, CCR title 16-division 42. BCC-section 5723

**Limit(s) of Quantitation (LOQ):** The minimum levels, concentrations, or quantities of a target variable (e.g., target analyte) that can be reported with a specified degree of confidence.

† = Analyte not NELAP accredited.

**Units of Measure**

- g = g
- g/ml = Gram per milliliter
- µg/g = Microgram per gram
- mg/kg = Milligram per kilogram = parts per million (ppm)
- mg/1g = Milligram per 1g
- % = Percentage of sample
- % wt = µg/g divided by 10,000

**Glossary of Qualifiers**

X: Not ORELAP accredited.

Approved Signatory

Derrick Tanner  
General Manager



12423 NE Whitaker Way  
Portland, OR 97230  
503-254-1794



Report Number: 22-003104/D002.R002  
Report Date: 04/01/2022  
ORELAP#: OR100028  
Purchase Order:  
Received: 03/17/22 14:20



12423 NE Whitaker Way Portland OR 97230 p.503-254-1794

Cannabis Chain of Custody Record

ORELAP ID: OR100028

FORM Field ID Dept		Date/Time Collected	Pesticides - OR 59 compounds	Pesticide Multi-Residue - 379 compounds	Potency	Residual Solvents	Water Activity	Moisture	Terpenes	Micro: Yeast and Mold	Micro: E. Coli and Total Coliform	Heavy Metals	Mycotoxins	Other	Matrix	Weight	Serving size for edibles	Comments/Metric ID
EC01(A)-5625		3/15 9:30A			X										Liquid - TN	mg/g		LAZ-Nat. Discount
EC02(A)-5625		3/15 9:30A	X			X			X	X	X	X						Potency 1st

Collected By:	Relinquished By:	Date	Time	Received by:	Date	Time	Lab Use Only:
<input checked="" type="checkbox"/> Standard (5 day) <input type="checkbox"/> Rush (3-4 day) (1.5x Standard) <input type="checkbox"/> Priority Rush (2 day) (2x Standard)							Client Alias: Order Number: Proper Container: Sample Condition: Temperature: 20.0°C Shipped Via: Client Evidence of cooling: <input type="checkbox"/> Yes <input checked="" type="checkbox"/> No

SUBMISSION OF SAMPLES WITH TESTING REQUIREMENTS TO PIXIS WILL BE UNDERSTOOD TO BE AN AGREEMENT FOR SERVICES IN ACCORDANCE WITH THE CONDITIONS LISTED ON THE BACK OF THIS FORM  
 Revision: 1.02 Control#: CF023 Effective 01/31/2019 Revised 01/31/2019  
[www.pixislabs.com](http://www.pixislabs.com)  
 Page 1 of 2





12423 NE Whitaker Way  
Portland, OR 97230  
503-254-1794

**Report Number:** 22-003104/D002.R002  
**Report Date:** 04/01/2022  
**ORELAP#:** OR100028  
**Purchase Order:**  
**Received:** 03/17/22 14:20



Revision 1 Documen D 7148  
Legacy D Workshee Valida ed 04/20/2021

**Laboratory Quality Control Results**

**J AOAC 2015 V98-6 Batch ID: 2202413**

Laboratory Control Sample								
Analyte	Result	Spike	Units	% Rec	Limits	Evaluation	Notes	
CBDVA	0.00951	0.01	%	95.1	80.0 - 120	Acceptable		
CBDV	0.0127	0.01	%	127	80.0 - 120	Acceptable	Q6	
CBE	0.00955	0.01	%	95.5	80.0 - 120	Acceptable		
CBDA	0.0102	0.01	%	102	80.0 - 120	Acceptable		
CBGA	0.00956	0.01	%	95.6	80.0 - 120	Acceptable		
CBG	0.00975	0.01	%	97.5	80.0 - 120	Acceptable		
CBD	0.00993	0.01	%	99.3	80.0 - 120	Acceptable		
THCV	0.00971	0.01	%	97.1	80.0 - 120	Acceptable		
d8THCV	0.0100	0.01	%	100	80.0 - 120	Acceptable		
THCVA	0.00919	0.01	%	91.9	80.0 - 120	Acceptable		
CBN	0.0104	0.01	%	104	80.0 - 120	Acceptable		
exo-THC	0.00914	0.01	%	91.4	80.0 - 120	Acceptable		
d9THC	0.0100	0.01	%	100	80.0 - 120	Acceptable		
d8THC	0.0100	0.01	%	100	80.0 - 120	Acceptable		
CBL	0.00908	0.01	%	90.8	80.0 - 120	Acceptable		
CBC	0.0101	0.01	%	101	80.0 - 120	Acceptable		
THCA	0.00959	0.01	%	95.9	80.0 - 120	Acceptable		
CBCA	0.00988	0.01	%	98.8	80.0 - 120	Acceptable		
CBLA	0.00958	0.01	%	95.8	80.0 - 120	Acceptable		
CBT	0.0101	0.01	%	101	80.0 - 120	Acceptable		

**Method Blank**

Analyte	Result	LOQ	Units	Limits	Evaluation	Notes	
CBDVA	< LOQ	0.003	%	< 0.003	Acceptable		
CBDV	< LOQ	0.003	%	< 0.003	Acceptable		
CBE	< LOQ	0.003	%	< 0.003	Acceptable		
CBDA	< LOQ	0.003	%	< 0.003	Acceptable		
CBGA	< LOQ	0.003	%	< 0.003	Acceptable		
CBG	< LOQ	0.003	%	< 0.003	Acceptable		
CBD	< LOQ	0.003	%	< 0.003	Acceptable		
THCV	< LOQ	0.003	%	< 0.003	Acceptable		
d8THCV	< LOQ	0.003	%	< 0.003	Acceptable		
THCVA	< LOQ	0.003	%	< 0.003	Acceptable		
CBN	< LOQ	0.003	%	< 0.003	Acceptable		
exo-THC	< LOQ	0.003	%	< 0.003	Acceptable		
d9THC	< LOQ	0.003	%	< 0.003	Acceptable		
d8THC	< LOQ	0.003	%	< 0.003	Acceptable		
CBL	< LOQ	0.003	%	< 0.003	Acceptable		
CBC	< LOQ	0.003	%	< 0.003	Acceptable		
THCA	< LOQ	0.003	%	< 0.003	Acceptable		
CBCA	< LOQ	0.003	%	< 0.003	Acceptable		
CBLA	< LOQ	0.003	%	< 0.003	Acceptable		
CBT	< LOQ	0.003	%	< 0.003	Acceptable		

**Abbreviations**

ND - None Detected at or above MRL  
RPD - Relative Percent Difference  
LOQ - Limit of Quantitation

**Units of Measure:**

% - Percent



12423 NE Whitaker Way  
Portland, OR 97230  
503-254-1794



**Report Number:** 22-003104/D002.R002  
**Report Date:** 04/01/2022  
**ORELAP#:** OR100028  
**Purchase Order:**  
**Received:** 03/17/22 14:20

Revision 1 Document D 7148  
Legacy D Worksheet Validated 04/20/2021

**Laboratory Quality Control Results**

J AOAC 2015 V98-6								
Batch ID: 2202413								
Sample Duplicate								
Sample D 22-003006-0001								
Analyte	Result	Org. Result	LOQ	Units	RPD	Limits	Evaluation	Notes
CBDVA	< LOQ	< LOQ	0.003	%	NA	< 20	Acceptable	
CBDV	< LOQ	< LOQ	0.003	%	NA	< 20	Acceptable	
CBE	< LOQ	< LOQ	0.003	%	NA	< 20	Acceptable	
CBDA	< LOQ	< LOQ	0.003	%	NA	< 20	Acceptable	
CBGA	< LOQ	< LOQ	0.003	%	NA	< 20	Acceptable	
CBG	< LOQ	< LOQ	0.003	%	NA	< 20	Acceptable	
CBD	14.7	15.3	0.003	%	4.11	< 20	Acceptable	
THCV	< LOQ	< LOQ	0.003	%	NA	< 20	Acceptable	
d8THCV	< LOQ	< LOQ	0.003	%	NA	< 20	Acceptable	
THCVA	< LOQ	< LOQ	0.003	%	NA	< 20	Acceptable	
CBN	< LOQ	< LOQ	0.003	%	NA	< 20	Acceptable	
exo-THC	< LOQ	< LOQ	0.003	%	NA	< 20	Acceptable	
d9THC	< LOQ	< LOQ	0.003	%	NA	< 20	Acceptable	
d8THC	< LOQ	< LOQ	0.003	%	NA	< 20	Acceptable	
CBL	< LOQ	< LOQ	0.003	%	NA	< 20	Acceptable	
CBC	< LOQ	< LOQ	0.003	%	NA	< 20	Acceptable	
THCA	< LOQ	< LOQ	0.003	%	NA	< 20	Acceptable	
CBCA	< LOQ	< LOQ	0.003	%	NA	< 20	Acceptable	
CBLA	< LOQ	< LOQ	0.003	%	NA	< 20	Acceptable	
CBT	< LOQ	< LOQ	0.003	%	NA	< 20	Acceptable	

**Abbreviations**

ND - None Detected at or above MRL  
RPD - Relative Percent Difference  
LOQ - Limit of Quantitation

**Units of Measure:**

% - Percent



12423 NE Whitaker Way  
 Portland, OR 97230  
 503-254-1794

**Report Number:** 22-003104/D002.R002  
**Report Date:** 04/01/2022  
**ORELAP#:** OR100028  
**Purchase Order:**  
**Received:** 03/17/22 14:20



evision 1 Document D 7086  
 Legacy D CFL-E57Worksheet Validated 11/04/2020

**Terpenes Quality Control Results**

Method Reference EPA 5035				Batch ID 2202746					
Method Blank				Laboratory Control Sample					
Analyte	Result	LOQ	Notes	Result	LCS	Units	LCS % Rec	Limits	Notes
a-pinene	< OQ	< 200		487	500	µg/g	97%	70 - 30	
Camphene	< OQ	< 200		5 8	500	µg/g	104%	70 - 30	
Sabinene	< OQ	< 200		507	500	µg/g	101%	70 - 30	
b-Pinene	< OQ	< 200		54	500	µg/g	108%	70 - 30	
b-Myrcene	< OQ	< 200		5 7	500	µg/g	103%	70 - 30	
a-phellandrene	< OQ	< 200		506	500	µg/g	101%	70 - 30	
d-3-Carene	< OQ	< 200		53	500	µg/g	106%	70 - 30	
a-Terpinene	< OQ	< 200		5 5	500	µg/g	103%	70 - 30	
p-Cymene	< OQ	< 200		496	500	µg/g	99%	70 - 30	
D- imonene	< OQ	< 200		499	500	µg/g	100%	70 - 30	
ucalyp ol	< OQ	< 200		5 4	500	µg/g	103%	70 - 30	
b-cis-Ocimene	< OQ	< 67		47	67	µg/g	88%	70 - 30	
b- rans-Ocimene	< OQ	< 33		289	333	µg/g	87%	70 - 30	
g-Terpinene	< OQ	< 200		505	500	µg/g	101%	70 - 30	
Sabinene Hydra e	< OQ	< 200		5 0	500	µg/g	102%	70 - 30	
Terpinolene	< OQ	< 200		495	500	µg/g	99%	70 - 30	
D- enchone	< OQ	< 200		526	500	µg/g	105%	70 - 30	
inalool	< OQ	< 200		442	500	µg/g	88%	70 - 30	
enchol	< OQ	< 200		50	500	µg/g	100%	70 - 30	
Camphor	< OQ	< 200		527	500	µg/g	105%	70 - 30	
sopulego	< OQ	< 200		525	500	µg/g	105%	70 - 30	
soborneol	< OQ	< 200		539	500	µg/g	108%	70 - 30	
Borneol	< OQ	< 200		504	500	µg/g	101%	70 - 30	
D -Men hol	< OQ	< 200		533	500	µg/g	107%	70 - 30	
Terpineol	< OQ	< 200		474	500	µg/g	95%	70 - 30	
Nerol	< OQ	< 200		458	500	µg/g	92%	70 - 30	
Pulegone	< OQ	< 200		5 4	500	µg/g	103%	70 - 30	
Geraniol	< OQ	< 200		457	500	µg/g	91%	70 - 30	
Geranyl Ace a e	< OQ	< 200		529	500	µg/g	106%	70 - 30	
a-Cedrene	< OQ	< 200		5 9	500	µg/g	104%	70 - 30	
b-Caryophyllene	< OQ	< 200		538	500	µg/g	108%	70 - 30	
a-Humulene	< OQ	< 200		53	500	µg/g	106%	70 - 30	
Valenene	< OQ	< 200		530	500	µg/g	106%	70 - 30	
cis-Nerolidol	< OQ	< 200		533	500	µg/g	107%	70 - 30	
a- arnesene	< OQ	< 200		522	500	µg/g	104%	70 - 30	
rans-Nerolidol	< OQ	< 200		5	500	µg/g	102%	70 - 30	
Caryophyllene Oxide	< OQ	< 200		542	500	µg/g	108%	70 - 30	
Guaiol	< OQ	< 200		547	500	µg/g	109%	70 - 30	
Cedrol	< OQ	< 200		576	500	µg/g	115%	70 - 30	
a-Bisabolol	< OQ	< 200		555	500	µg/g	111%	70 - 30	

Definitions

LOQ Limit of Quantitation  
 LCS Laboratory Control Sample  
 % REC Percent Recovery



12423 NE Whitaker Way  
 Portland, OR 97230  
 503-254-1794



**Report Number:** 22-003104/D002.R002  
**Report Date:** 04/01/2022  
**ORELAP#:** OR100028  
**Purchase Order:**  
**Received:** 03/17/22 14:20

Revision 1 Document D 7086  
 Legacy D CFL-E57Worksheet Validated 11/04/2020

**Terpenes Quality Control Results**

Method Reference EPA 5035		Batch ID 2202746					
Sample/Sample Duplicate		Sample ID 22-003454-0001					
Analyte	Result	Org. Result	LOQ	Units	% RPD	LIMIT	Notes
a-pinene	< OQ	< OQ	87	µg/g	0%	< 20	
Camphene	< OQ	< OQ	87	µg/g	0%	< 20	
Sabinene	< OQ	< OQ	87	µg/g	0%	< 20	
b-Pinene	< OQ	< OQ	87	µg/g	0%	< 20	
b-Myrcene	544	534	87	µg/g	2%	< 20	
a-phellandrene	< OQ	< OQ	87	µg/g	0%	< 20	
d-3-Carene	< OQ	< OQ	87	µg/g	0%	< 20	
a-Terpinene	< OQ	< OQ	87	µg/g	0%	< 20	
p-Cymene	< OQ	< OQ	87	µg/g	0%	< 20	
D-imonene	360	355	87	µg/g	1%	< 20	
α-caryophyllol	94	87	87	µg/g	4%	< 20	
b-cis-Ocimene	< OQ	< OQ	62.4	µg/g	0%	< 20	
b-trans-Ocimene	< OQ	< OQ	25	µg/g	0%	< 20	
g-Terpinene	< OQ	< OQ	87	µg/g	0%	< 20	
Sabinene Hydrate	262	264	87	µg/g	1%	< 20	
Terpinolene	207	232	87	µg/g	11%	< 20	
D-enchone	268	256	87	µg/g	5%	< 20	
α-inalool	5790	5800	87	µg/g	0%	< 20	
β-enchol	2360	2380	87	µg/g	1%	< 20	
Camphor	203	200	87	µg/g	3%	< 20	
α-sopulego	< OQ	< OQ	87	µg/g	0%	< 20	
α-soborneol	< OQ	< OQ	87	µg/g	0%	< 20	
Borneol	360	360	87	µg/g	0%	< 20	
D-α-Menthyl	< OQ	< OQ	87	µg/g	0%	< 20	
Terpineol	3330	3370	87	µg/g	1%	< 20	
Nerol	< OQ	< OQ	87	µg/g	0%	< 20	
Pulegone	< OQ	< OQ	87	µg/g	0%	< 20	
Geraniol	< OQ	< OQ	87	µg/g	0%	< 20	
Geranyl Acetate	249	249	87	µg/g	0%	< 20	
α-Cedrene	< OQ	< OQ	87	µg/g	0%	< 20	
b-Caryophyllene	55500	54500	87	µg/g	2%	< 20	
α-Humulene	27200	27700	87	µg/g	2%	< 20	
Valenene	< OQ	< OQ	87	µg/g	0%	< 20	
cis-Nerolidol	< OQ	< OQ	87	µg/g	0%	< 20	
α-arnesene	48400	47600	87	µg/g	2%	< 20	
trans-Nerolidol	6670	6260	87	µg/g	6%	< 20	
Caryophyllene Oxide	3400	3400	87	µg/g	0%	< 20	
Guaiol	2300	2500	87	µg/g	1%	< 20	
Cedrol	< OQ	< OQ	87	µg/g	0%	< 20	
α-Bisabolol	37300	37200	87	µg/g	0%	< 20	

Definitions

RPD Relative Percent Difference



12423 NE Whitaker Way  
Portland, OR 97230  
503-254-1794



Report Number: 22-003104/D002.R002  
Report Date: 04/01/2022  
ORELAP#: OR100028  
Purchase Order:  
Received: 03/17/22 14:20

Rev s o 3 Docume D 3 20  
Legacy D C L C2 Wo ks ee Va da ed 0/30/2020

Laboratory Pesticide Quality Control Results

AOAC 2007.1 & EN 15662		Units: mg/Kg		Laboratory Control Sample		Batch ID: 2202765		
Method Blank	Blank Result	Blank Limits	Notes	LCS Result	LCS Spike	LCS % Rec	Limits	Notes
Abamectin	0.000	< 0.250		1.749	1.000	174.9	82.1	Q1
Acephate	0.000	< 0.250		1.029	1.000	102.9	67.5	125
Acequinocyl	0.000	< 1.000		3.551	4.000	88.8	87.5	107
Acetamiprid	0.000	< 0.100		0.407	0.400	101.7	86.4	109
Aldicarb	0.000	< 0.200		0.803	0.800	100.4	76.3	142
Azoxystrobin	0.000	< 0.100		0.405	0.400	101.3	76.5	117
Bifenazate	0.000	< 0.100		0.412	0.400	102.9	72.4	134
Bifenthrin	0.000	< 0.100		0.396	0.400	99.1	75.5	115
Boscalid	0.000	< 0.200		0.783	0.800	97.9	77.7	118
Carbaryl	0.000	< 0.100		0.410	0.400	102.5	87.4	105
Carbofuran	0.000	< 0.100		0.392	0.400	98.1	88.1	107
Chlorantranilprole	0.000	< 0.100		0.388	0.400	96.9	85.4	111
Chlorfenapyr	0.000	< 0.500		2.142	2.000	107.1	71.3	129
Chlorpyrifos	0.000	< 0.100		0.409	0.400	102.1	79.8	109
Clofentazine	0.000	< 0.100		0.401	0.400	100.3	84.1	107
Cyfluthrin	0.000	< 0.500		1.965	2.000	98.2	76.5	119
Cypermethrin	0.000	< 0.500		2.049	2.000	102.4	86.2	108
Daminozide	0.000	< 0.500		1.247	2.000	62.3	68.3	127
Diazinon	0.000	< 0.100		0.407	0.400	101.8	86.4	110
Dichlorvos	0.000	< 0.500		1.989	2.000	99.4	82.1	108
Dimethoate	0.000	< 0.100		0.413	0.400	103.3	87.2	105
Ethoprophos	0.000	< 0.100		0.400	0.400	99.9	83.0	109
Etofenprox	0.000	< 0.200		0.762	0.800	95.2	72.7	119
Etoxazole	0.000	< 0.100		0.414	0.400	103.6	79.7	118
Fenoxycarb	0.000	< 0.100		0.410	0.400	102.5	87.9	107
Fenpyroximate	0.000	< 0.200		0.826	0.800	103.3	84.1	108
Fipronil	0.000	< 0.200		0.835	0.800	104.4	88.0	110
Flonicamid	0.000	< 0.250		0.969	1.000	96.9	69.8	120
Fludioxonil	0.000	< 0.200		0.772	0.800	96.5	81.7	116
Hexythiazox	0.000	< 0.250		1.018	1.000	101.8	81.0	112
Imazalil	0.000	< 0.100		0.414	0.400	103.5	80.9	116
Imidacloprid	0.000	< 0.200		0.810	0.800	101.2	80.6	111
Kresoxim methyl	0.000	< 0.200		0.832	0.800	104.0	84.3	111
Malathion	0.000	< 0.100		0.409	0.400	102.3	83.1	112
Metaxyl	0.000	< 0.100		0.412	0.400	103.0	86.7	105
Methiocarb	0.000	< 0.100		0.404	0.400	101.0	82.2	112
Methomyl	0.000	< 0.200		0.684	0.800	85.5	70.3	116
MGK 264	0.000	< 0.100		0.424	0.400	106.1	83.4	110
Myclobutanil	0.000	< 0.100		0.412	0.400	102.9	86.4	109
Naled	0.000	< 0.250		1.033	1.000	103.3	86.5	104
Oxamyl	0.000	< 0.500		1.853	2.000	92.7	76.2	112
Paclobutrazole	0.000	< 0.200		0.793	0.800	99.1	89.2	105
Parathion Methyl	0.000	< 0.200		0.824	0.800	103.0	71.0	132
Permethrin	0.000	< 0.100		0.398	0.400	99.4	85.1	108
Phosmet	0.000	< 0.100		0.406	0.400	101.4	82.7	112
Piperonyl butoxide	0.000	< 0.500		2.308	2.000	115.4	72.3	134
Prallethrin	0.000	< 0.100		0.404	0.400	100.9	84.9	110
Propiconazole	0.000	< 0.200		0.840	0.800	105.0	87.4	108
Propoxur	0.000	< 0.100		0.407	0.400	101.8	88.0	104
Pyrethrin (Summe)	0.000	< 0.100		0.406	0.413	98.2	76.0	121
Pyridaben	0.000	< 0.100		0.414	0.400	103.4	80.6	118
Spinosad	0.000	< 0.100		0.398	0.388	102.6	76.9	125
Spiromesifen	0.000	< 0.100		0.437	0.400	109.3	79.9	125
Spirotetramat	0.000	< 0.100		0.420	0.400	104.9	88.2	108
Spiroxamine	0.000	< 0.200		0.827	0.800	103.4	83.2	106
ebuconazole	0.000	< 0.200		0.848	0.800	106.0	87.0	109
hiacloprid	0.000	< 0.100		0.409	0.400	102.3	87.5	105
hiamethoxam	0.000	< 0.100		0.366	0.400	91.5	67.6	121
rifloxystrobin	0.000	< 0.100		0.411	0.400	102.8	83.6	108



12423 NE Whitaker Way  
 Portland, OR 97230  
 503-254-1794



Report Number: 22-003104/D002.R002  
 Report Date: 04/01/2022  
 ORELAP#: OR100028  
 Purchase Order:  
 Received: 03/17/22 14:20

Rev so 3 Docume D 3 20  
 Legacy D C L C2 Wo ks ee Va da ed 0/30/2020

Laboratory Pesticide Quality Control Results

AOAC 2007.1 & EN 15662		Units: mg/Kg					Batch ID: 2202765				
Matrix Spike/Matrix Spike Duplicate Recoveries		Sample ID: 22-003104-0001									
Analyte	Result	MS Res	MSD Res	Spike	RPD%	Limit	MS % Rec	MSD % Rec	Limits	Notes	
Abamectin	0.000	1.862	1.803	1.000	3.2%	< 30	186.2%	180.3%	50 150	Q	
Acephate	0.002	1.008	1.030	1.000	2.1%	< 30	100.7%	102.8%	50 150		
Acequinocyl	0.000	1.987	2.514	4.000	23.4%	< 30	49.7%	62.8%	50 150	Q	
Acetamiprid	0.000	0.403	0.408	0.400	1.3%	< 30	100.7%	102.1%	50 150		
Aldicarb	0.000	0.822	0.807	0.800	1.8%	< 30	102.8%	100.9%	50 150		
Azoxystrobin	0.000	0.364	0.381	0.400	4.4%	< 30	91.1%	95.1%	50 150		
Bifenazate	0.000	0.473	0.476	0.400	0.6%	< 30	118.2%	118.9%	50 150		
Bifenthrin	0.000	0.333	0.352	0.400	5.6%	< 30	83.2%	88.0%	50 150		
Boscalid	0.000	0.836	0.782	0.800	6.8%	< 30	104.5%	97.7%	50 150		
Carbaryl	0.000	0.406	0.409	0.400	0.9%	< 30	101.5%	102.4%	50 150		
Carbofuran	0.000	0.401	0.393	0.400	1.9%	< 30	100.2%	98.3%	50 150		
Chlorantraniliprole	0.000	0.395	0.403	0.400	2.0%	< 30	98.9%	100.9%	50 150		
Chlorfenapyr	0.000	2.378	2.216	2.000	7.0%	< 30	118.9%	110.8%	50 150		
Chlorpyrifos	0.000	0.438	0.397	0.400	9.8%	< 30	109.5%	99.3%	50 150		
Clofentazine	0.000	0.415	0.433	0.400	4.3%	< 30	103.7%	108.3%	50 150		
Cyfluthrin	0.000	1.364	1.446	2.000	5.8%	< 30	68.2%	72.3%	30 150		
Cypermethrin	0.000	1.265	1.317	2.000	4.0%	< 30	63.2%	65.8%	50 150		
Daminozide	0.133	2.327	2.327	2.000	0.0%	< 30	109.7%	109.7%	30 150		
Diazinon	0.000	0.419	0.416	0.400	0.7%	< 30	104.7%	104.0%	50 150		
Dichlorvos	0.000	2.032	1.945	2.000	4.4%	< 30	101.6%	97.2%	50 150		
Dimethoate	0.000	0.410	0.409	0.400	0.1%	< 30	102.4%	102.3%	50 150		
Ethoprophos	0.000	0.382	0.389	0.400	1.9%	< 30	95.5%	97.4%	50 150		
Etofenprox	0.000	0.562	0.578	0.800	2.9%	< 30	70.2%	72.3%	50 150		
Etoxazole	0.000	0.401	0.400	0.400	0.1%	< 30	100.2%	100.0%	50 150		
Fenoxycarb	0.000	0.408	0.427	0.400	4.5%	< 30	102.0%	106.6%	50 150		
Fenpyroximate	0.000	0.513	0.528	0.800	2.9%	< 30	64.1%	66.0%	50 150		
Fipronil	0.000	0.842	0.865	0.800	2.7%	< 30	105.3%	108.2%	50 150		
Flonicamid	0.000	1.077	1.039	1.000	3.6%	< 30	107.7%	103.9%	50 150		
Fludioxonil	0.000	0.851	0.859	0.800	1.0%	< 30	106.3%	107.3%	50 150		
Hexythiazox	0.000	1.134	1.157	1.000	2.1%	< 30	113.4%	115.7%	50 150		
Imazalil	0.000	0.401	0.410	0.400	2.2%	< 30	100.4%	102.6%	50 150		
Imidacloprid	0.000	0.837	0.826	0.800	1.4%	< 30	104.7%	103.2%	50 150		
Kresoxim methyl	0.000	0.865	0.884	0.800	2.2%	< 30	108.1%	110.5%	50 150		
Malathion	0.000	0.414	0.426	0.400	2.7%	< 30	103.6%	106.4%	50 150		
Metaxyl	0.000	0.408	0.407	0.400	0.4%	< 30	102.0%	101.7%	50 150		
Methiocarb	0.000	0.409	0.411	0.400	0.6%	< 30	102.2%	102.9%	50 150		
Methomyl	0.000	0.733	0.705	0.800	3.9%	< 30	91.7%	88.1%	50 150		
MGK 264	0.000	0.459	0.467	0.400	1.7%	< 30	114.8%	116.8%	50 150		
Myclobutanil	0.000	0.402	0.375	0.400	6.9%	< 30	100.4%	93.7%	50 150		
Naled	0.000	1.014	1.025	1.000	1.1%	< 30	101.4%	102.5%	50 150		
Oxamyl	0.000	1.504	1.939	2.000	25.3%	< 30	75.2%	97.0%	50 150		
Paclobutrazole	0.000	0.812	0.830	0.800	2.2%	< 30	101.5%	103.8%	50 150		
Parathion Methyl	0.000	0.774	0.677	0.800	13.4%	< 30	96.8%	84.6%	30 150		
Permethrin	0.000	0.361	0.373	0.400	3.4%	< 30	90.1%	93.3%	50 150		
Phosmet	0.000	0.409	0.422	0.400	3.2%	< 30	102.3%	105.6%	50 150		
Piperonyl butoxide	0.000	2.509	2.412	2.000	4.0%	< 30	125.5%	120.6%	50 150		
Prallethrin	0.070	0.456	0.448	0.400	2.1%	< 30	96.5%	94.5%	50 150		
Propiconazole	0.000	0.949	0.944	0.800	0.5%	< 30	118.6%	118.0%	50 150		
Propoxur	0.000	0.411	0.406	0.400	1.4%	< 30	102.8%	101.4%	50 150		
Pyrethrin (Summe)	0.084	0.471	0.506	0.413	8.6%	< 30	93.8%	102.2%	50 150		
Pyridaben	0.000	0.418	0.424	0.400	1.6%	< 30	104.4%	106.1%	50 150		
Spinosad	0.000	0.449	0.453	0.388	0.9%	< 30	115.8%	116.9%	50 150		
Spiromesifen	0.000	0.336	0.354	0.400	5.1%	< 30	84.0%	88.4%	50 150		
Spirotetramat	0.000	0.430	0.444	0.400	3.2%	< 30	107.5%	111.0%	50 150		
Spiroxamine	0.000	0.852	0.876	0.800	2.8%	< 30	106.5%	109.4%	50 150		
ebuconazole	0.000	0.833	0.841	0.800	0.9%	< 30	104.1%	105.1%	50 150		
hiacloprid	0.000	0.399	0.403	0.400	0.9%	< 30	99.8%	100.7%	50 150		
hiamethoxam	0.000	0.359	0.391	0.400	8.5%	< 30	89.8%	97.8%	50 150		
rifloxystrobin	0.000	0.460	0.459	0.400	0.2%	< 30	115.0%	114.8%	50 150		



12423 NE Whitaker Way  
Portland, OR 97230  
503-254-1794



**Report Number:** 22-003104/D002.R002  
**Report Date:** 04/01/2022  
**ORELAP#:** OR100028  
**Purchase Order:**  
**Received:** 03/17/22 14:20

Revision Document ID  
Legacy ID Effective

Laboratory Quality Control Results

Residual Solvents		Batch ID: 2202772							
Method Blank		Laboratory Control Sample							
Analyte	Result	LOQ	Notes	Result	Spike	Units	% Rec	Limits	Notes
Propane	ND	200		5.9	5.2	µg/g	90	60	20
Isobutane	ND	200		590	3	µg/g	5.2	60	20
Butane	ND	200		5.0	3	µg/g	3.9	60	20
2,2-Dimethylpropane	ND	200		93	936	µg/g	99.5	60	20
Methanol	ND	200		5.0	620	µg/g	96.9	60	20
Ethylene Oxide	ND	0		5.8	56.2	µg/g	8.5	60	20
2-Methylbutane	ND	200		6.0	620	µg/g	00.6	60	20
Pentane	ND	200		620	6.0	µg/g	00.6	60	20
Ethanol	ND	200		0	630	µg/g	0.9	0	30
Ethyl Ether	ND	200		5.0	620	µg/g	95	60	20
2,2-Dimethylbutane	ND	0		5		µg/g	88.5	60	20
Acetone	ND	200		5.0	690	µg/g	93.3	60	20
2-Propanol	ND	200		5.0	6.0	µg/g	95.0	60	20
Ethyl Formate	ND	500		560	600	µg/g	9.5	0	30
Acetone Trile	ND	00		5.6	98	µg/g	03.6	60	20
Methyl Acetate	ND	500		5.0	6.0	µg/g	95	0	30
2,3-Dimethylbutane	ND	0		9	6	µg/g	8	60	20
Dichloromethane	ND	60		93	5.0	µg/g	96	60	20
2-Methylpentane	ND	0		6	6	µg/g	00.0	60	20
M. BE	ND	500		6.0	600	µg/g	00.6	0	30
3-Methylpentane	ND	0		5	5	µg/g	00.6	60	20
Hexane	ND	0		1	1	µg/g	98.9	60	20
Propanol	ND	500		5.0	6.0	µg/g	93.8	0	30
Methylethylketone	ND	500		5.0	600	µg/g	9	0	30
Ethyl acetate	ND	200		6.0	630	µg/g	00.0	60	20
2-Butanol	ND	200		560	620	µg/g	96.3	60	20
tetrahydrofuran	ND	60		505	500	µg/g	0.0	60	20
Cyclohexane	ND	200		5.0	620	µg/g	95	60	20
2-methyl propanol	ND	500		500	620	µg/g	92.6	0	30
Benzene	ND			5.29	5.32	µg/g	99	60	20
Isopropyl Acetate	ND	200		650	620	µg/g	0.9	60	20
Heptane	ND	200		660	0	µg/g	93.8	60	20
Butanol	ND	500		60	600	µg/g	9.3	0	30
Propyl Acetate	ND	500		0	600	µg/g	9.9	0	30
Dioxane	ND	00		86	50	µg/g	96	60	20
2-Ethoxyethanol	ND	0		90	8	µg/g	05.0	60	20
Methylisobutylketone	ND	500		560	6.0	µg/g	96.9	0	30
3-Methyl butanol	ND	500		5.0	6.0	µg/g	95.0	0	30
Ethylene Glycol	ND	200		5.5	9	µg/g	0.3	60	20
o-xylene	ND	200		508	9	µg/g	03.5	60	20
Isobutyl Acetate	ND	500		500	600	µg/g	93.8	0	30
Pentanol	ND	500		60	6.0	µg/g	90	0	30
Butyl Acetate	ND	500		0	6.0	µg/g	8.6	0	30
Ethyl benzene	ND	200		020	9.3	µg/g	0.8	60	20
m,p Xylene	ND	200		998	996	µg/g	00.2	60	20
o Xylene	ND	200		0.0	9.3	µg/g	0.0	60	20
Cumene	ND	0		9	0	µg/g	2	60	20
Anisole	ND	500		600	6.0	µg/g	99	0	30
DMSO	ND	500		660	630	µg/g	0.8	0	30
2-dimethoxyethane	ND	50		6	6	µg/g	00.0	0	30
diethylamine	ND	500		0	600	µg/g	88	0	30
N,N-dimethylformamide	ND	50		2	9	µg/g	95.0	0	30
N,N-dimethylacetamide	ND	50		50	98	µg/g	00.6	0	30
Pyridine	ND	50		80		µg/g	96	0	30
2-Dichloroethane	ND			6		µg/g	6.0	0	30
Chloroform	ND			3		µg/g	3.0	0	30
trichloroethylene	ND			3		µg/g	3.0	0	30



12423 NE Whitaker Way  
 Portland, OR 97230  
 503-254-1794



**Report Number:** 22-003104/D002.R002  
**Report Date:** 04/01/2022  
**ORELAP#:** OR100028  
**Purchase Order:**  
**Received:** 03/17/22 14:20

Revision Document ID  
 Legacy ID Effective

QC Sample Duplicate Sample ID: 22 003104 0001

Analyte	Result	Org. Result	LOQ	Units	RPD	Limits	Accept/Fail	Notes
Propane	ND	ND	200	µg/g	0.0	20	Acceptable	
Isobutane	ND	ND	200	µg/g	0.0	20	Acceptable	
Butane	ND	ND	200	µg/g	0.0	20	Acceptable	
2,2 Dimethylpropane	ND	ND	200	µg/g	0.0	20	Acceptable	
Methanol	ND	ND	200	µg/g	0.0	20	Acceptable	
Ethylene Oxide	ND	ND	30	µg/g	0.0	20	Acceptable	
2 Methyl butane	ND	ND	200	µg/g	0.0	20	Acceptable	
Pentane	ND	ND	200	µg/g	0.0	20	Acceptable	
Ethanol	ND	ND	200	µg/g	0.0	20	Acceptable	
Ethyl Ether	ND	ND	200	µg/g	0.0	20	Acceptable	
2,2 Dimethylbutane	ND	ND	30	µg/g	0.0	20	Acceptable	
Acetone	ND	ND	200	µg/g	0.0	20	Acceptable	
2 Propanol	ND	ND	200	µg/g	0.0	20	Acceptable	
Ethyl Formate	ND	ND	500	µg/g	0.0	20	Acceptable	
Aceton Trile	ND	ND	00	µg/g	0.0	20	Acceptable	
Methyl Acetate	ND	ND	500	µg/g	0.0	20	Acceptable	
2,3 Dimethylbutane	ND	ND	30	µg/g	0.0	20	Acceptable	
Dichloromethane	ND	ND	60	µg/g	0.0	20	Acceptable	
2 Methyl pentane	ND	ND	30	µg/g	0.0	20	Acceptable	
M. SE	ND	ND	500	µg/g	0.0	20	Acceptable	
3 Methyl pentane	ND	ND	30	µg/g	0.0	20	Acceptable	
Hexane	ND	ND	30	µg/g	0.0	20	Acceptable	
Propanol	ND	ND	500	µg/g	0.0	20	Acceptable	
Methyl ethyl ketone	ND	ND	500	µg/g	0.0	20	Acceptable	
Ethyl acetate	ND	ND	200	µg/g	0.0	20	Acceptable	
2 Butanol	ND	ND	200	µg/g	0.0	20	Acceptable	
tetrahydrofuran	ND	ND	00	µg/g	0.0	20	Acceptable	
Cyclohexane	ND	ND	200	µg/g	0.0	20	Acceptable	
2 methyl propanol	ND	ND	500	µg/g	0.0	20	Acceptable	
Benzene	ND	ND	µg/g	0.0	20	Acceptable		
Isopropyl Acetate	ND	ND	200	µg/g	0.0	20	Acceptable	
Heptane	ND	ND	200	µg/g	0.0	20	Acceptable	
Butanol	ND	ND	500	µg/g	0.0	20	Acceptable	
Propyl Acetate	ND	ND	500	µg/g	0.0	20	Acceptable	
Dioxane	ND	ND	00	µg/g	0.0	20	Acceptable	
2 Ethoxyethanol	ND	ND	30	µg/g	0.0	20	Acceptable	
Methylisobutylketone	ND	ND	500	µg/g	0.0	20	Acceptable	
3 Methyl butanol	ND	ND	500	µg/g	0.0	20	Acceptable	
Ethylene Glycol	ND	ND	200	µg/g	0.0	20	Acceptable	
okane	ND	ND	200	µg/g	0.0	20	Acceptable	
Isobutyl Acetate	ND	ND	500	µg/g	0.0	20	Acceptable	
Pentanol	ND	ND	500	µg/g	0.0	20	Acceptable	
Butyl Acetate	ND	ND	500	µg/g	0.0	20	Acceptable	
Ethyl benzene	ND	ND	200	µg/g	0.0	20	Acceptable	
m p Xylene	ND	ND	200	µg/g	0.0	20	Acceptable	
o Xylene	ND	ND	200	µg/g	0.0	20	Acceptable	
Cumene	ND	ND	30	µg/g	0.0	20	Acceptable	
Anisole	ND	ND	500	µg/g	0.0	20	Acceptable	
DMSO	ND	ND	500	µg/g	0.0	20	Acceptable	
2 dimethoxyethane	ND	ND	50	µg/g	0.0	20	Acceptable	
triethylamine	ND	ND	500	µg/g	0.0	20	Acceptable	
N,N,d methylformamide	ND	ND	50	µg/g	0.0	20	Acceptable	
N,N,d methylacetamide	ND	ND	50	µg/g	0.0	20	Acceptable	
Pyridine	ND	ND	50	µg/g	0.0	20	Acceptable	
2 Dichloroethane	ND	ND	µg/g	0.0	20	Acceptable		
Chloroform	ND	ND	µg/g	0.0	20	Acceptable		
richloroethylene	ND	ND	µg/g	0.0	20	Acceptable		

**Abbreviations**  
 ND None Detected at or above MRL  
 RPD Relative Percent Difference  
 LOQ Limit of Quantitation

**Units of Measure:**  
 µg/g Microgram per gram or ppm





12423 NE Whitaker Way  
 Portland, OR 97230  
 503-254-1794



**Report Number:** 22-003104/D002.R002  
**Report Date:** 04/01/2022  
**ORELAP#:** OR100028  
**Purchase Order:**  
**Received:** 03/17/22 14:20

Explanation of QC Flag Comments:

Code	Explanation
Q	Matrix interferences affecting spike or surrogate recoveries.
Q1	Quality control result biased high. Only non-detect samples reported.
Q2	Quality control outside QC limits. Data considered estimate.
Q3	Sample concentration greater than four times the amount spiked.
Q4	Non-homogenous sample matrix, affecting RPD result and/or % recoveries.
Q5	Spike results above calibration curve.
Q6	Quality control outside QC limits. Data acceptable based on remaining QC.
R	Relative percent difference (RPD) outside control limit.
R1	RPD non-calculable, as sample or duplicate results are less than five times the LOQ.
R2	Sample replicates RPD non-calculable, as only one replicate is within the analytical range.
LOQ1	Quantitation level raised due to low sample volume and/or dilution.
LOQ2	Quantitation level raised due to matrix interference.
B	Analyte detected in method blank, but not in associated samples.
B1	The sample concentration is greater than 5 times the blank concentration.
B2	The sample concentration is less than 5 times the blank concentration.



12423 NE Whitaker Way  
Portland, OR 97230  
503-254-1794



**Report Number:** 22-003104/D004.R000  
**Report Date:** 04/01/2022  
**ORELAP#:** OR100028  
**Purchase Order:**  
**Received:** 03/17/22 14:20

**Customer:** Etz Hayim Holdings  
**Product identity:** EC01(A)-SG25  
**Client/Metric ID:** .  
**Laboratory ID:** 22-003104-0002

### Summary

-----  
**Microbiology:**

Less than LOQ for all analytes.



12423 NE Whitaker Way  
 Portland, OR 97230  
 503-254-1794



**Report Number:** 22-003104/D004.R000  
**Report Date:** 04/01/2022  
**ORELAP#:** OR100028  
**Purchase Order:**  
**Received:** 03/17/22 14:20

**Customer:** Etz Hayim Holdings  
 16427 NE Airport Way  
 PORTLAND 97230  
 United States of America (USA)

**Product identity:** EC01(A)-SG25  
**Client/Metric ID:** .  
**Sample Date:**  
**Laboratory ID:** 22-003104-0002  
**Evidence of Cooling:** No  
**Temp:** 20.8 °C  
**Relinquished by:** Client

### Sample Results

#### Microbiology

Analyte	Result	Limits	Units	LOQ	Batch	Analyze	Method	Status	Notes
E.coli	< LOQ		cfu/g	10	2202685	03/31/22	AOAC 991.14 (Petrifilm)	X, I	
Total Coliforms	< LOQ		cfu/g	10	2202685	03/31/22	AOAC 991.14 (Petrifilm)	X, I	
Mold (RAPID Petrifilm)	< LOQ		cfu/g	10	2202686	04/01/22	AOAC 2014.05 (RAPID)	X, I	
Yeast (RAPID Petrifilm)	< LOQ		cfu/g	10	2202686	04/01/22	AOAC 2014.05 (RAPID)	X, I	



12423 NE Whitaker Way  
Portland, OR 97230  
503-254-1794



**Report Number:** 22-003104/D004.R000  
**Report Date:** 04/01/2022  
**ORELAP#:** OR100028  
**Purchase Order:**  
**Received:** 03/17/22 14:20

These test results are representative of the individual sample selected and submitted by the client.

**Abbreviations**

**Limits:** Action Levels per OAR-333-007-0400, OAR-333-007-0210, OAR-333-007-0220, CCR title 16-division 42. BCC-section 5723

**Limit(s) of Quantitation (LOQ):** The minimum levels, concentrations, or quantities of a target variable (e.g., target analyte) that can be reported with a specified degree of confidence.

**Units of Measure**

cfu/g = Colony forming units per gram

% wt =  $\mu\text{g/g}$  divided by 10,000

**Glossary of Qualifiers**

I: Insufficient sample received to meet method requirements.

X: Not ORELAP accredited.

Approved Signatory

Derrick Tanner  
General Manager



12423 NE Whitaker Way  
Portland, OR 97230  
503-254-1794



Report Number: 22-003104/D004.R000  
Report Date: 04/01/2022  
ORELAP#: OR100028  
Purchase Order:  
Received: 03/17/22 14:20



12423 NE Whitaker Way Portland OR 97230 p.503-254-1794

**Cannabis Chain of Custody Record**

ORELAP ID: OR100028

FORM Field ID		Date/Time Collected	Analysis Requested										Matrix	Weight	Serving size for edibles	Comments/Metric ID		
			Pesticides - OR 59 compounds	Pesticide Multi-Residue - 379 compounds	Potency	Residual Solvents	Water Activity	Moisture	Terpenes	Micro: Yeast and Mold	Micro: E. Coli and Total Coliform	Heavy Metals	Mycotoxins	Other:				
[Redacted]					X													
EC01(A)-5625		3/15 9:30A			X										Liquid - TN	mg/g		LAZ-Nat. Discount
EC02(A)-5625		3/15 9:30A	X			X			X	X	X	X						Potency 1st

Collected By:	Relinquished By:	Date	Time	Received by:	Date	Time	Lab Use Only:
<input checked="" type="checkbox"/> Standard (5 day) <input type="checkbox"/> Rush (3-4 day) (1.5x Standard) <input type="checkbox"/> Priority Rush (2 day) (2x Standard)	[Redacted]	[Redacted]	[Redacted]	[Redacted]	[Redacted]	[Redacted]	Client Alias: Order Number: Proper Container: Sample Condition: Temperature: 20.0°C Shipped Via: Client Evidence of cooling: <input type="checkbox"/> Yes <input checked="" type="checkbox"/> No

SUBMISSION OF SAMPLES WITH TESTING REQUIREMENTS TO PIXIS WILL BE UNDERSTOOD TO BE AN AGREEMENT FOR SERVICES IN ACCORDANCE WITH THE CONDITIONS LISTED ON THE BACK OF THIS FORM  
 Revision: 1.02 Control#: CF023 Effective 01/31/2019 Revised 01/31/2019  
[www.pixislabs.com](http://www.pixislabs.com)  
 Page 1 of 2

Test results relate only to the parameters tested and to the samples as received by the laboratory. Test results meet all requirements of NELAP and the Columbia Laboratories quality assurance plan unless otherwise noted. This report shall not be reproduced, except in full, without the written consent of this laboratory. Samples will be retained for a maximum of 30 days from the receipt date unless prior arrangements have been made.  
 Testing in accordance with: OAR 333-007-0390



12423 NE Whitaker Way  
 Portland, OR 97230  
 503-254-1794



**Report Number:** 22-003104/D004.R000  
**Report Date:** 04/01/2022  
**ORELAP#:** OR100028  
**Purchase Order:**  
**Received:** 03/17/22 14:20

Explanation of QC Flag Comments:

Code	Explanation
Q	Matrix interferences affecting spike or surrogate recoveries.
Q1	Quality control result biased high. Only non-detect samples reported.
Q2	Quality control outside QC limits. Data considered estimate.
Q3	Sample concentration greater than four times the amount spiked.
Q4	Non-homogenous sample matrix, affecting RPD result and/or % recoveries.
Q5	Spike results above calibration curve.
Q6	Quality control outside QC limits. Data acceptable based on remaining QC.
R	Relative percent difference (RPD) outside control limit.
R1	RPD non-calculable, as sample or duplicate results are less than five times the LOQ.
R2	Sample replicates RPD non-calculable, as only one replicate is within the analytical range.
LOQ1	Quantitation level raised due to low sample volume and/or dilution.
LOQ2	Quantitation level raised due to matrix interference.
B	Analyte detected in method blank, but not in associated samples.
B1	The sample concentration is greater than 5 times the blank concentration.
B2	The sample concentration is less than 5 times the blank concentration.

## CONSOLIDATED TEST RESULTS SUMMARY

Please see the following pages for full test results.

<b>BULK SKU</b>	<b>BATCH #</b>	<b>LOQ: Limit Of Quantitation</b>	
<b>PRODUCT NAME</b>	<b>SERVING SIZE</b>	<b>LOD: Limit Of Detection</b>	
<b>LABORATORY :</b>	<b>OREGON ACCREDITATION: OR100028</b>	1 g = 10 <sup>-3</sup> kg = 10 <sup>3</sup> mg = 10 <sup>6</sup> µg 1 mg/kg = 1 ppm = 1000 ppb	
POTENCY	PER SERVING	PER GRAM	Percent
Cannabidiol (CBD)	mg/serving	mg/g	%
Total THC (d9-THC, THCA)	mg/serving	mg/g	%
Cannabigerol (CBG)	mg/serving	mg/g	%
Cannabinol (CBN)	mg/serving	mg/g	%
Cannabichromene (CBC)	mg/serving	mg/g	%
Tetrahydrocannabinolic Acid (THCA)	mg/serving	mg/g	%
Delta-9-THC (d9-THC)	mg/serving	mg/g	%
Delta-8-THC (d8-THC)	mg/serving	mg/g	%
HEAVY METALS	PER SERVING	PER GRAM	REGULATORY ACTION LEVEL
Arsenic	µg/serving	µg/g	10 µg/day <sup>[1]</sup>
Cadmium	µg/serving	µg/g	4.1 µg/day <sup>[1]</sup>
Lead	µg/serving	µg/g	6 µg/day <sup>[1]</sup>
Mercury	µg/serving	µg/g	2 µg/day <sup>[1]</sup>
PESTICIDES	REGULATORY ACTION LEVEL		
None of the other 59 pesticides tested found above limit of detection in the sample.			10 ppb <sup>[1]</sup>
RESIDUAL SOLVENTS	Results	REGULATORY ACTION LEVEL	
Ethanol*	µg/g	50,000 mg/day	
Heptane	µg/g	50,000 mg/day	
None of the 34 residual solvents tested found above limit of quantitation in the sample.			
MICROBIAL	PASS/FAIL		
Yeast & Mold	Pass		
Coliform	Pass		
TERPENES	% OF SAMPLE		
Farnesene	%		
β-Caryophyllene	%		
α-Bisabolol	%		
Guaiol	%		
Humulene	%		
Caryophyllene Oxide	%		

1. American Herbal Pharmacopoeia. (2014). Cannabis Inflorescence: Standards of Identity, Analysis, and Quality Control. Washington DC: AHP.

\*Ethanol is a food additive used in some of our ingredients. The FDA has labeled ethanol as Generally Recognized as Safe (GRAS). Many foods contain trace amounts of ethanol, including soy sauce, pasta sauces, fruits and juices, etc. Our products contain safe levels of ethanol and always below pertinent regulatory action levels.



12423 NE Whitaker Way  
 Portland, OR 97230  
 503-254-1794



**Report Number:** 23-007460/D003.R001  
**Report Date:** 07/13/2023  
**ORELAP#:** OR100028  
**Purchase Order:**  
**Received:** 06/23/23 10:32

This is an amended version of report# 23-007460/D003.R000.

**Reason:** Report includes additional testing.

**Customer:** Etz Hayim Holdings  
**Product identity:** FORM-SG50.V2-FE33(A)  
**Client/Metric ID:** .  
**Laboratory ID:** 23-007460-0001

### Summary

**Potency:**

Analyte per 1g	Result	Limits	Units	Status	
CBC per 1g	5.35		mg/1g		CBD-Total per Serving Size 129 mg/1g
CBD per 1g	129		mg/1g		
CBDV per 1g	0.809		mg/1g		THC-Total per Serving Size 2.73 mg/1g
CBE per 1g	11.3		mg/1g		(Reported in milligrams per serving)
CBG per 1g	1.19		mg/1g		
CBN per 1g	1.00		mg/1g		
CBT per 1g	2.97		mg/1g		
Δ9-THC per 1g	2.73		mg/1g		

**Residual Solvents:**

All analytes passing and less than LOQ.

**Pesticides:**

All analytes passing and less than LOQ.

**Terpenes:**

Analyte	Percent by weight	Percent of Total	Analyte	Percent by weight	Percent of Total
(R)-(+)-Limonene	3.39	46.95%	a-pinene	2.93	40.58%
β-Caryophyllene	0.708	9.81%	Humulene	0.0771	1.07%
Camphene	0.0437	0.61%	β-Myrcene	0.0377	0.52%
(-)-caryophyllene oxide	0.0330	0.46%	<b>Total Terpenes</b>	<b>7.22</b>	<b>100.00%</b>

**Metals:**

Less than LOQ for all analytes.

**Microbiology:**

Less than LOQ for all analytes.





12423 NE Whitaker Way  
 Portland, OR 97230  
 503-254-1794



**Report Number:** 23-007460/D003.R001  
**Report Date:** 07/13/2023  
**ORELAP#:** OR100028  
**Purchase Order:**  
**Received:** 06/23/23 10:32

**Customer:** Etz Hayim Holdings  
 16427 NE Airport Way  
 PORTLAND 97230  
 United States of America (USA)  
**Product identity:** FORM-SG50.V2-FE33(A)  
**Client/Metric ID:** .  
**Sample Date:**  
**Laboratory ID:** 23-007460-0001  
**Evidence of Cooling:** No  
**Temp:** 25.6  
**Relinquished by:** client  
**Serving Size #1:** 1 g

### Sample Results

Potency per 1g	Method: J AOAC 2015 V98-6 (mod) <sup>b</sup>	Units mg/se	Batch: 2308565	Analyze: 6/26/23 7:47:00 PM	
Analyte	Result	Limits	Units	LOQ	Notes
CBC per 1g	5.35		mg/1g	0.751	
CBC-A per 1g	< LOQ		mg/1g	0.751	
CBC-Total per 1g	5.35		mg/1g	1.41	
CBD per 1g	129		mg/1g	0.751	
CBD-A per 1g	< LOQ		mg/1g	0.751	
CBD-Total per 1g	129		mg/1g	1.41	
CBDV per 1g	0.809		mg/1g	0.751	
CBDV-A per 1g	< LOQ		mg/1g	0.751	
CBDV-Total per 1g	< LOQ		mg/1g	1.40	
CBE per 1g	11.3		mg/1g	0.751	
CBG per 1g	1.19		mg/1g	0.751	
CBG-A per 1g	< LOQ		mg/1g	0.751	
CBG-Total per 1g	< LOQ		mg/1g	1.40	
CBL per 1g	< LOQ		mg/1g	0.751	
CBL-A per 1g	< LOQ		mg/1g	0.751	
CBL-Total per 1g	< LOQ		mg/1g	1.41	
CBN per 1g	1.00		mg/1g	0.751	
CBT per 1g	2.97		mg/1g	0.751	
Δ8-THCV per 1g	< LOQ		mg/1g	0.751	
Δ10-THC-9R per 1g	< LOQ		mg/1g	0.751	
Δ10-THC-9S per 1g	< LOQ		mg/1g	0.751	
Δ10-THC-Total per 1g	< LOQ		mg/1g	1.50	
Δ8-THC per 1g	< LOQ		mg/1g	0.751	
Δ9-THC per 1g	2.73		mg/1g	0.751	
delta-9-THCP per 1g	< LOQ		mg/1g	0.751	
exo-THC per 1g	< LOQ		mg/1g	0.751	
THC-A per 1g	< LOQ		mg/1g	0.751	
THC-Total per 1g	2.73		mg/1g	1.41	
THCV per 1g	< LOQ		mg/1g	0.751	
THCV-A per 1g	< LOQ		mg/1g	0.751	



12423 NE Whitaker Way  
Portland, OR 97230  
503-254-1794



**Report Number:** 23-007460/D003.R001  
**Report Date:** 07/13/2023  
**ORELAP#:** OR100028  
**Purchase Order:**  
**Received:** 06/23/23 10:32

Potency per 1g **Method:** J AOAC 2015 V98-6 (mod)<sup>P</sup> **Units mg/se** **Batch:** 2308565 **Analyze:** 6/26/23 7:47:00 PM

Analyte	Result	Limits	Units	LOQ	Notes
THCV-Total per 1g	< LOQ		mg/1g	1.41	
Total Cannabinoids per 1g	154		mg/1g		

Microbiology

Analyte	Result	Limits	Units	LOQ	Batch	Analyzed Method	Status	Notes
E.coli	< LOQ		cfu/g	1	2308844	07/09/23 AOAC 991.14 (Petrifilm) <sup>P</sup>		
Total Coliforms	< LOQ		cfu/g	1	2308844	07/09/23 AOAC 991.14 (Petrifilm) <sup>P</sup>		
Mold (RAPID Petrifilm)	< LOQ		cfu/g	10	2308845	07/09/23 AOAC 2014.05 (RAPID) <sup>P</sup>		
Yeast (RAPID Petrifilm)	< LOQ		cfu/g	10	2308845	07/09/23 AOAC 2014.05 (RAPID) <sup>P</sup>		

Solvents **Method:** Residual Solvents by GC/MS<sup>P</sup> **Units µg/g** **Batch** 2308992 **Analyze** 07/12/23 11:24 AM

Analyte	Result	Limits	LOQ	Status	Notes	Analyte	Result	Limits	LOQ	Status	Notes
1,4-Dioxane	< LOQ	380	100	pass		2-Butanol	< LOQ	5000	200	pass	
2-Ethoxyethanol	< LOQ	160	30.0	pass		2-Methylbutane (Isopentane)	< LOQ		200		
2-Methylpentane	< LOQ		30.0			2-Propanol (IPA)	< LOQ	5000	200	pass	
2,2-Dimethylbutane	< LOQ		30.0			2,2-Dimethylpropane (neo-pentane)	< LOQ		200		
2,3-Dimethylbutane	< LOQ		30.0			3-Methylpentane	< LOQ		30.0		
Acetone	< LOQ	5000	200	pass		Acetonitrile	< LOQ	410	100	pass	
Benzene	< LOQ	2.00	1.00	pass		Butanes (sum)	< LOQ	5000	400	pass	
Cyclohexane	< LOQ	3880	200	pass		Ethanol	< LOQ		200		
Ethyl acetate	< LOQ	5000	200	pass		Ethyl benzene	< LOQ		200		
Ethyl ether	< LOQ	5000	200	pass		Ethylene glycol	< LOQ	620	200	pass	
Ethylene oxide	< LOQ	50.0	20.0	pass		Hexanes (sum)	< LOQ	290	150	pass	
Isopropyl acetate	< LOQ	5000	200	pass		Isopropylbenzene (Cumene)	< LOQ	70.0	30.0	pass	
m,p-Xylene	< LOQ		200			Methanol	< LOQ	3000	200	pass	
Methylene chloride	< LOQ	600	60.0	pass		Methylpropane (Isobutane)	< LOQ		200		
n-Butane	< LOQ		200			n-Heptane	< LOQ	5000	200	pass	
n-Hexane	< LOQ		30.0			n-Pentane	< LOQ		200		
o-Xylene	< LOQ		200			Pentanes (sum)	< LOQ	5000	600	pass	
Propane	< LOQ	5000	200	pass		Tetrahydrofuran	< LOQ	720	100	pass	
Toluene	< LOQ	890	100	pass		Total Xylenes	< LOQ		400		
Total Xylenes and Ethyl benzene	< LOQ	2170	600	pass							



12423 NE Whitaker Way  
 Portland, OR 97230  
 503-254-1794

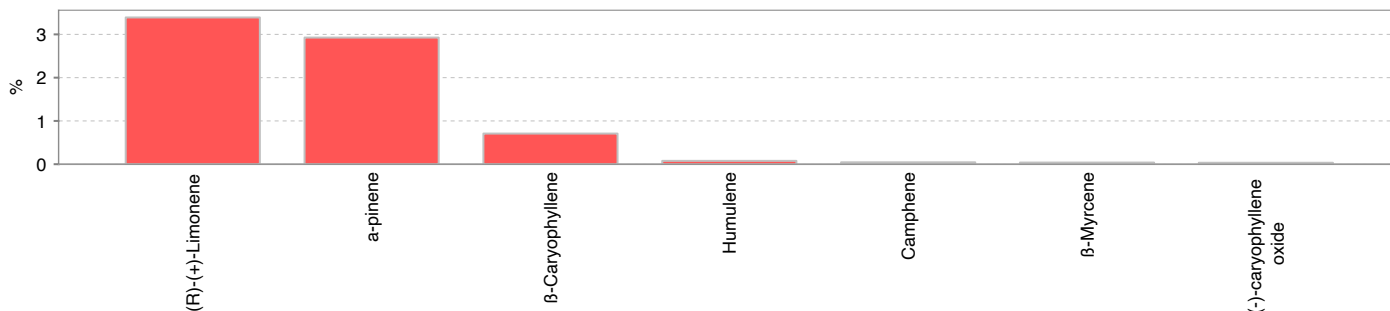


**Report Number:** 23-007460/D003.R001  
**Report Date:** 07/13/2023  
**ORELAP#:** OR100028  
**Purchase Order:**  
**Received:** 06/23/23 10:32

Pesticides											
Method: AOAC 2007.01 & EN 15662 (mod) <sup>b</sup>											
Units mg/kg Batch 2308994 Analyze 07/12/23 11:54 AM											
Analyte	Result	Limits	LOQ	Status	Notes	Analyte	Result	Limits	LOQ	Status	Notes
Abamectin <sup>¥</sup>	< LOQ	0.50	0.250	pass		Acephate <sup>¥</sup>	< LOQ	0.40	0.200	pass	
Acequinocyl <sup>¥</sup>	< LOQ	2.0	1.00	pass		Acetamiprid <sup>¥</sup>	< LOQ	0.20	0.100	pass	
Aldicarb <sup>¥</sup>	< LOQ	0.40	0.200	pass		Azoxystrobin <sup>¥</sup>	< LOQ	0.20	0.100	pass	
Bifenazate <sup>¥</sup>	< LOQ	0.20	0.100	pass		Bifenthrin <sup>¥</sup>	< LOQ	0.20	0.100	pass	
Boscalid <sup>¥</sup>	< LOQ	0.40	0.200	pass		Carbaryl <sup>¥</sup>	< LOQ	0.20	0.100	pass	
Carbofuran <sup>¥</sup>	< LOQ	0.20	0.100	pass		Chlorantraniliprole <sup>¥</sup>	< LOQ	0.20	0.100	pass	
Chlorfenapyr <sup>¥</sup>	< LOQ	1.0	0.500	pass		Chlorpyrifos <sup>¥</sup>	< LOQ	0.20	0.100	pass	
Clofentezine <sup>¥</sup>	< LOQ	0.20	0.100	pass		Cyfluthrin <sup>¥</sup>	< LOQ	1.0	0.500	pass	
Cypermethrin <sup>¥</sup>	< LOQ	1.0	0.500	pass		Daminozide <sup>¥</sup>	< LOQ	1.0	0.500	pass	
Diazinon <sup>¥</sup>	< LOQ	0.20	0.100	pass		Dichlorvos <sup>¥</sup>	< LOQ	1.0	0.500	pass	
Dimethoate <sup>¥</sup>	< LOQ	0.20	0.100	pass		Ethoprophos <sup>¥</sup>	< LOQ	0.20	0.100	pass	
Etofenprox <sup>¥</sup>	< LOQ	0.40	0.200	pass		Etoxazole <sup>¥</sup>	< LOQ	0.20	0.100	pass	
Fenoxycarb <sup>¥</sup>	< LOQ	0.20	0.100	pass		Fenpyroximate <sup>¥</sup>	< LOQ	0.40	0.200	pass	
Fipronil <sup>¥</sup>	< LOQ	0.40	0.200	pass		Fonicamid <sup>¥</sup>	< LOQ	1.0	0.400	pass	
Fludioxonil <sup>¥</sup>	< LOQ	0.40	0.200	pass		Hexythiazox <sup>¥</sup>	< LOQ	1.0	0.400	pass	
Imazali <sup>¥</sup>	< LOQ	0.20	0.100	pass		Imidacloprid <sup>¥</sup>	< LOQ	0.40	0.200	pass	
Kresoxim-methyl <sup>¥</sup>	< LOQ	0.40	0.200	pass		Malathion <sup>¥</sup>	< LOQ	0.20	0.100	pass	
Metalaxyl <sup>¥</sup>	< LOQ	0.20	0.100	pass		Methiocarb <sup>¥</sup>	< LOQ	0.20	0.100	pass	
Methomyl <sup>¥</sup>	< LOQ	0.40	0.200	pass		MGK-264 <sup>¥</sup>	< LOQ	0.20	0.100	pass	
Myclobutanil <sup>¥</sup>	< LOQ	0.20	0.100	pass		Naled <sup>¥</sup>	< LOQ	0.50	0.250	pass	
Oxamyl <sup>¥</sup>	< LOQ	1.0	0.500	pass		Paclobotrazole <sup>¥</sup>	< LOQ	0.40	0.200	pass	
Parathion-Methyl <sup>¥</sup>	< LOQ	0.20	0.100	pass		Permethrin <sup>¥</sup>	< LOQ	0.20	0.100	pass	
Phosmet <sup>¥</sup>	< LOQ	0.20	0.100	pass		Piperonyl butoxide <sup>¥</sup>	< LOQ	2.0	1.00	pass	
Prallethrin <sup>¥</sup>	< LOQ	0.20	0.100	pass		Propiconazole <sup>¥</sup>	< LOQ	0.40	0.200	pass	
Propoxur <sup>¥</sup>	< LOQ	0.20	0.100	pass		Pyrethrin I (total) <sup>¥</sup>	< LOQ	1.0	0.500	pass	
Pyridaben <sup>¥</sup>	< LOQ	0.20	0.100	pass		Spinosad <sup>¥</sup>	< LOQ	0.20	0.100	pass	
Spiromesifen <sup>¥</sup>	< LOQ	0.20	0.100	pass		Spirotetramat <sup>¥</sup>	< LOQ	0.20	0.100	pass	
Spiroxamine <sup>¥</sup>	< LOQ	0.40	0.200	pass		Tebuconazole <sup>¥</sup>	< LOQ	0.40	0.200	pass	
Thiacloprid <sup>¥</sup>	< LOQ	0.20	0.100	pass		Thiamethoxam <sup>¥</sup>	< LOQ	0.20	0.100	pass	
Trifloxystrobin <sup>¥</sup>	< LOQ	0.20	0.100	pass							



Terpenes				Method: J AOAC 2015 V98-6	Units %	Batch 2308665	Analyze 06/28/23 02:36 PM		
Analyte	Result	LOQ	% of Total	Notes	Analyte	Result	LOQ	% of Total	Notes
(R)-(+)-Limonene	3.39	0.018	46.95%		a-pinene	2.93	0.018	40.58%	
β-Caryophyllene	0.708	0.018	9.806%		Humulene	0.0771	0.018	1.0679%	
Camphene	0.0437	0.018	0.6053%		β-Myrcene	0.0377	0.018	0.5222%	
(-)-caryophyllene oxide	0.0330	0.018	0.4571%		a-Bisabolol	< LOQ	0.018	0.00%	
Linalool	< LOQ	0.018	0.00%		Geranyl acetate	< LOQ	0.018	0.00%	
(+)-fenchol	< LOQ	0.018	0.00%		(-)-β-Pinene	< LOQ	0.018	0.00%	
farnesene	< LOQ	0.018	0.00%		(+)-Cedrol	< LOQ	0.018	0.00%	
(±)-fenchone	< LOQ	0.018	0.00%		Sabinene	< LOQ	0.018	0.00%	
Terpinolene	< LOQ	0.018	0.00%		(±)-Camphor	< LOQ	0.018	0.00%	
Geraniol	< LOQ	0.018	0.00%		Sabinene hydrate	< LOQ	0.018	0.00%	
(+)-Pulegone	< LOQ	0.018	0.00%		trans-β-Ocimene	< LOQ	0.012	0.00%	
(-)-a-Terpineol	< LOQ	0.018	0.00%		a-phellandrene	< LOQ	0.018	0.00%	
Isoborneol	< LOQ	0.018	0.00%		gamma-Terpinene	< LOQ	0.018	0.00%	
(-)-Guaiol	< LOQ	0.018	0.00%		(+)-Borneol	< LOQ	0.018	0.00%	
Eucalyptol	< LOQ	0.018	0.00%		(±)-trans-Nerolidol	< LOQ	0.018	0.00%	
valencene	< LOQ	0.018	0.00%		(-)-Isopulegol	< LOQ	0.018	0.00%	
a-Terpinene	< LOQ	0.018	0.00%		d-3-Carene	< LOQ	0.018	0.00%	
cis-β-Ocimene	< LOQ	0.006	0.00%		(±)-cis-Nerolidol	< LOQ	0.018	0.00%	
a-cedrene	< LOQ	0.018	0.00%		Menthol	< LOQ	0.018	0.00%	
nerol	< LOQ	0.018	0.00%		p-Cymene	< LOQ	0.018	0.00%	
<b>Total Terpenes</b>	<b>7.22</b>								



Metals								
Analyte	Result	Limits	Units	LOQ	Batch	Analyzed Method	Status	Notes
Arsenic <sup>¥</sup>	< LOQ	0.200	mg/kg	0.0966	2309029	07/12/23 AOAC 2013.06 (mod.) <sup>Þ</sup>	pass	
Cadmium <sup>¥</sup>	< LOQ	0.200	mg/kg	0.0966	2309029	07/12/23 AOAC 2013.06 (mod.) <sup>Þ</sup>	pass	
Lead <sup>¥</sup>	< LOQ	0.500	mg/kg	0.0966	2309029	07/12/23 AOAC 2013.06 (mod.) <sup>Þ</sup>	pass	
Mercury <sup>¥</sup>	< LOQ	0.100	mg/kg	0.0483	2309029	07/12/23 AOAC 2013.06 (mod.) <sup>Þ</sup>	pass	



12423 NE Whitaker Way  
Portland, OR 97230  
503-254-1794



**Report Number:** 23-007460/D003.R001  
**Report Date:** 07/13/2023  
**ORELAP#:** OR100028  
**Purchase Order:**  
**Received:** 06/23/23 10:32

**Abbreviations**

**Limits:** Action Levels per OAR-333-007-0400, OAR-333-007-0210, OAR-333-007-0220, CCR title 16-division 42. BCC-section 5723

**Limit(s) of Quantitation (LOQ):** The minimum levels, concentrations, or quantities of a target variable (e.g., target analyte) that can be reported with a specified degree of confidence.

Ⓐ = ISO/IEC 17025:2017 accredited method.

Ⓜ = TNI accredited analyte.

**Units of Measure**

cfu/g = Colony forming units per gram

g = g

µg/g = Microgram per gram

mg/kg = Milligram per kilogram = parts per million (ppm)

mg/1g = Milligram per 1g

% = Percentage of sample

% wt = µg/g divided by 10,000

Approved Signatory

Derrick Tanner  
General Manager



12423 NE Whitaker Way  
Portland, OR 97230  
503-254-1794



**Report Number:** 23-007460/D003.R001  
**Report Date:** 07/13/2023  
**ORELAP#:** OR100028  
**Purchase Order:**  
**Received:** 06/23/23 10:32

Revision: 4 Document ID: 7148  
Legacy ID: Worksheet Validated 04/20/2021

Laboratory Quality Control Results

J AOAC 2015 V98-6 Batch ID: 2308565

Laboratory Control Sample									
Analyte	LCS	Result	Spike	Units	% Rec	Limits		Evaluation	Notes
CBDVA	2	0.0739	0.0729	%	101	80.0	- 120	Acceptable	
CBDV	2	0.0686	0.0727	%	94.4	80.0	- 120	Acceptable	
CBE	2	0.0748	0.0803	%	93.2	80.0	- 120	Acceptable	
CBDA	1	0.0787	0.0750	%	105	90.0	- 110	Acceptable	
CBGA	1	0.0779	0.0753	%	103	80.0	- 120	Acceptable	
CBG	1	0.0786	0.0766	%	103	80.0	- 120	Acceptable	
CBD	1	0.0803	0.0779	%	103	90.0	- 110	Acceptable	
THCV	2	0.0559	0.0546	%	102	80.0	- 120	Acceptable	
d8THCV	2	0.0638	0.0644	%	99.1	80.0	- 120	Acceptable	
THCVA	2	0.0706	0.0711	%	99.3	80.0	- 120	Acceptable	
CBN	1	0.0794	0.0784	%	101	80.0	- 120	Acceptable	
exo-THC	2	0.0655	0.0653	%	100	80.0	- 120	Acceptable	
d9THC	1	0.0782	0.0759	%	103	90.0	- 110	Acceptable	
d8THC	1	0.0701	0.0738	%	95.0	90.0	- 110	Acceptable	
9S-d10THC	1	0.0789	0.0791	%	99.9	80.0	- 120	Acceptable	
CBL	2	0.0770	0.0718	%	107	80.0	- 120	Acceptable	
9R-d10THC	1	0.0743	0.0722	%	103	80.0	- 120	Acceptable	
CBC	2	0.0657	0.0675	%	97.3	80.0	- 120	Acceptable	
THCA	1	0.0756	0.0744	%	102	90.0	- 110	Acceptable	
CBCA	2	0.0759	0.0737	%	103	80.0	- 120	Acceptable	
CBLA	2	0.0726	0.0698	%	104	80.0	- 120	Acceptable	
d9THCP	2	0.0734	0.0752	%	97.6	80.0	- 120	Acceptable	
CBT	2	0.0723	0.0753	%	96.0	80.0	- 120	Acceptable	

Method Blank							
Analyte	Result	LOQ	Units	Limits		Evaluation	Notes
CBDVA	<LOQ	0.0765	%	< 0.0765		Acceptable	
CBDV	<LOQ	0.0765	%	< 0.0765		Acceptable	
CBE	<LOQ	0.0765	%	< 0.0765		Acceptable	
CBDA	<LOQ	0.0765	%	< 0.0765		Acceptable	
CBGA	<LOQ	0.0765	%	< 0.0765		Acceptable	
CBG	<LOQ	0.0765	%	< 0.0765		Acceptable	
CBD	<LOQ	0.0765	%	< 0.0765		Acceptable	
THCV	<LOQ	0.0765	%	< 0.0765		Acceptable	
d8THCV	<LOQ	0.0765	%	< 0.0765		Acceptable	
THCVA	<LOQ	0.0765	%	< 0.0765		Acceptable	
CBN	<LOQ	0.0765	%	< 0.0765		Acceptable	
exo-THC	<LOQ	0.0765	%	< 0.0765		Acceptable	
d9THC	<LOQ	0.0765	%	< 0.0765		Acceptable	
d8THC	<LOQ	0.0765	%	< 0.0765		Acceptable	
9S-d10THC	<LOQ	0.0765	%	< 0.0765		Acceptable	
CBL	<LOQ	0.0765	%	< 0.0765		Acceptable	
9R-d10THC	<LOQ	0.0765	%	< 0.0765		Acceptable	
CBC	<LOQ	0.0765	%	< 0.0765		Acceptable	
THCA	<LOQ	0.0765	%	< 0.0765		Acceptable	
CBCA	<LOQ	0.0765	%	< 0.0765		Acceptable	
CBLA	<LOQ	0.0765	%	< 0.0765		Acceptable	
d9THCP	<LOQ	0.0765	%	< 0.0765		Acceptable	
CBT	<LOQ	0.0765	%	< 0.0765		Acceptable	

**Abbreviations**  
ND - None Detected at or above MRL  
RPD - Relative Percent Difference  
LOQ - Limit of Quantitation

**Units of Measure:**  
% - Percent



12423 NE Whitaker Way  
Portland, OR 97230  
503-254-1794



**Report Number:** 23-007460/D003.R001  
**Report Date:** 07/13/2023  
**ORELAP#:** OR100028  
**Purchase Order:**  
**Received:** 06/23/23 10:32

Revision: 4 Document ID: 7148  
Legacy ID: Worksheet Validated 04/20/2021

Laboratory Quality Control Results

J AOAC 2015 V98-6		Batch ID: 2308565						
Sample Duplicate		Sample ID: 23-007473-0001						
Analyte	Result	Org. Result	LOQ	Units	RPD	Limits	Evaluation	Notes
CBDVA	<LOQ	<LOQ	0.0762	%	NA	< 20	Acceptable	
CBDV	<LOQ	<LOQ	0.0762	%	NA	< 20	Acceptable	
CBE	<LOQ	<LOQ	0.0762	%	NA	< 20	Acceptable	
CBDA	<LOQ	<LOQ	0.0762	%	NA	< 20	Acceptable	
CBGA	<LOQ	<LOQ	0.0762	%	NA	< 20	Acceptable	
CBG	0.391	0.343	0.0762	%	13.0	< 20	Acceptable	
CBD	13.7	12.1	0.0762	%	12.9	< 20	Acceptable	
THCV	<LOQ	<LOQ	0.0762	%	NA	< 20	Acceptable	
d8THCV	<LOQ	<LOQ	0.0762	%	NA	< 20	Acceptable	
THCVA	<LOQ	<LOQ	0.0762	%	NA	< 20	Acceptable	
CBN	<LOQ	<LOQ	0.0762	%	NA	< 20	Acceptable	
exo-THC	<LOQ	<LOQ	0.0762	%	NA	< 20	Acceptable	
d9THC	<LOQ	<LOQ	0.0762	%	NA	< 20	Acceptable	
d8THC	<LOQ	<LOQ	0.0762	%	NA	< 20	Acceptable	
9S-d10THC	<LOQ	<LOQ	0.0762	%	NA	< 20	Acceptable	
CBL	<LOQ	<LOQ	0.0762	%	NA	< 20	Acceptable	
9R-d10THC	<LOQ	<LOQ	0.0762	%	NA	< 20	Acceptable	
CBC	0.109	0.0954	0.0762	%	13.1	< 20	Acceptable	
THCA	<LOQ	<LOQ	0.0762	%	NA	< 20	Acceptable	
CBCA	<LOQ	<LOQ	0.0762	%	NA	< 20	Acceptable	
CBLA	<LOQ	<LOQ	0.0762	%	NA	< 20	Acceptable	
d9THCP	<LOQ	<LOQ	0.0762	%	NA	< 20	Acceptable	
CBT	<LOQ	<LOQ	0.0762	%	NA	< 20	Acceptable	

Abbreviations

ND - None Detected at or above MRL  
RPD - Relative Percent Difference  
LOQ - Limit of Quantitation

Units of Measure:

% - Percent



12423 NE Whitaker Way  
 Portland, OR 97230  
 503-254-1794



**Report Number:** 23-007460/D003.R001  
**Report Date:** 07/13/2023  
**ORELAP#:** OR100028  
**Purchase Order:**  
**Received:** 06/23/23 10:32

Revision: 1 Document ID: 7086  
 Legacy ID: CFL-E57Worksheet Validated 11/04/2020

**Terpenes Quality Control Results**

Method Reference: EPA 5035				Batch ID: 2308665					
Method Blank				Laboratory Control Sample					
Analyte	Result	LOQ	Notes	Result	LCS	Units	LCS % Rec	Limits	Notes
a-pinene	<LOQ	< 200		416	500	µg/g	83%	70 - 130	
Camphene	<LOQ	< 200		453	500	µg/g	91%	70 - 130	
Sabinene	<LOQ	< 200		399	500	µg/g	80%	70 - 130	
b-Pinene	<LOQ	< 200		392	500	µg/g	78%	70 - 130	
b-Myrcene	<LOQ	< 200		423	500	µg/g	85%	70 - 130	
a-phellandrene	<LOQ	< 200		452	500	µg/g	90%	70 - 130	
d-3-Carene	<LOQ	< 200		458	500	µg/g	92%	70 - 130	
a-Terpinene	<LOQ	< 200		413	500	µg/g	83%	70 - 130	
p-Cymene	<LOQ	< 200		425	500	µg/g	85%	70 - 130	
D-Limonene	<LOQ	< 200		414	500	µg/g	83%	70 - 130	
Eucalyptol	<LOQ	< 200		424	500	µg/g	85%	70 - 130	
b-cis-Ocimene	<LOQ	< 67		138	167	µg/g	83%	70 - 130	
b-trans-Ocimene	<LOQ	< 133		292	333	µg/g	88%	70 - 130	
g-Terpinene	<LOQ	< 200		409	500	µg/g	82%	70 - 130	
Sabinene_Hydrate	<LOQ	< 200		420	500	µg/g	84%	70 - 130	
Terpinolene	<LOQ	< 200		401	500	µg/g	80%	70 - 130	
D-Fenchone	<LOQ	< 200		398	500	µg/g	80%	70 - 130	
Linalool	<LOQ	< 200		470	500	µg/g	94%	70 - 130	
Fenchol	<LOQ	< 200		444	500	µg/g	89%	70 - 130	
Camphor	<LOQ	< 200		431	500	µg/g	86%	70 - 130	
Isopulego	<LOQ	< 200		444	500	µg/g	89%	70 - 130	
Isoborneol	<LOQ	< 200		474	500	µg/g	95%	70 - 130	
Borneol	<LOQ	< 200		433	500	µg/g	87%	70 - 130	
DL-Menthol	<LOQ	< 200		429	500	µg/g	86%	70 - 130	
Terpineol	<LOQ	< 200		429	500	µg/g	86%	70 - 130	
Nerol	<LOQ	< 200		362	500	µg/g	72%	70 - 130	
Pulegone	<LOQ	< 200		436	500	µg/g	87%	70 - 130	
Geraniol	<LOQ	< 200		392	500	µg/g	78%	70 - 130	
Geranyl_Acetate	<LOQ	< 200		392	500	µg/g	78%	70 - 130	
a-Cedrene	<LOQ	< 200		398	500	µg/g	80%	70 - 130	
b-Caryophyllene	<LOQ	< 200		451	500	µg/g	90%	70 - 130	
a-Humulene	<LOQ	< 200		464	500	µg/g	93%	70 - 130	
Valenene	<LOQ	< 200		410	500	µg/g	82%	70 - 130	
cis-Nerolidol	<LOQ	< 200		472	500	µg/g	94%	70 - 130	
a-Farnesene	<LOQ	< 200		493	500	µg/g	99%	70 - 130	
trans-Nerolidol	<LOQ	< 200		429	500	µg/g	86%	70 - 130	
Caryophyllene_Oxide	<LOQ	< 200		452	500	µg/g	90%	70 - 130	
Guaiol	<LOQ	< 200		445	500	µg/g	89%	70 - 130	
Cedrol	<LOQ	< 200		467	500	µg/g	93%	70 - 130	
a-Bisabolol	<LOQ	< 200		464	500	µg/g	93%	70 - 130	

Definitions

LOQ	Limit of Quantitation
LCS	Laboratory Control Sample
% REC	Percent Recovery





12423 NE Whitaker Way  
 Portland, OR 97230  
 503-254-1794



**Report Number:** 23-007460/D003.R001  
**Report Date:** 07/13/2023  
**ORELAP#:** OR100028  
**Purchase Order:**  
**Received:** 06/23/23 10:32

Revision: 1 Document ID: 7086  
 Legacy ID: CFL-E57Worksheet Validated 11/04/2020

**Terpenes Quality Control Results**

Method Reference: EPA 5035		Batch ID: 2308665					
Sample/Sample Duplicate		Sample ID: 23-007476-0002					
Analyte	Result	Org. Result	LOQ	Units	% RPD	LIMIT	Notes
a-pinene	32600	32700	184	µg/g	0%	< 20	
Camphene	1200	1200	184	µg/g	0%	< 20	
Sabinene	3280	3300	184	µg/g	1%	< 20	
b-Pinene	197000	197000	184	µg/g	0%	< 20	
b-Myrcene	163000	164000	184	µg/g	1%	< 20	
a-phellandrene	3130	3150	184	µg/g	1%	< 20	
d-3-Carene	2950	2970	184	µg/g	1%	< 20	
a-Terpinene	2390	2410	184	µg/g	1%	< 20	
p-Cymene	1160	1170	184	µg/g	1%	< 20	
D-Limonene	222000	224000	184	µg/g	1%	< 20	
Eucalyptol	<LOQ	<LOQ	184	µg/g	0%	< 20	
b-cis-Ocimene	2400	2380	61.4	µg/g	1%	< 20	
b-trans-Ocimene	30800	30400	123	µg/g	1%	< 20	
g-Terpinene	10400	10400	184	µg/g	0%	< 20	
Sabinene_Hydrate	<LOQ	<LOQ	184	µg/g	0%	< 20	
Terpinolene	76200	76500	184	µg/g	0%	< 20	
D-Fenchone	271	267	184	µg/g	1%	< 20	
Linalool	24300	24300	184	µg/g	0%	< 20	
Fenchol	1390	1390	184	µg/g	0%	< 20	
Camphor	<LOQ	<LOQ	184	µg/g	0%	< 20	
Isopulego	<LOQ	<LOQ	184	µg/g	0%	< 20	
Isoborneol	<LOQ	<LOQ	184	µg/g	0%	< 20	
Borneol	284	291	184	µg/g	2%	< 20	
DL-Menthol	<LOQ	<LOQ	184	µg/g	0%	< 20	
Terpineol	1030	1020	184	µg/g	1%	< 20	
Nerol	<LOQ	<LOQ	184	µg/g	0%	< 20	
Pulegone	<LOQ	<LOQ	184	µg/g	0%	< 20	
Geraniol	<LOQ	<LOQ	184	µg/g	0%	< 20	
Geranyl_Acetate	<LOQ	<LOQ	184	µg/g	0%	< 20	
a-Cedrene	<LOQ	<LOQ	184	µg/g	0%	< 20	
b-Caryophyllene	57100	57400	184	µg/g	1%	< 20	
a-Humulene	22100	22200	184	µg/g	0%	< 20	
Valenene	289	288	184	µg/g	0%	< 20	
cis-Nerolidol	<LOQ	<LOQ	184	µg/g	0%	< 20	
a-Farnesene	<LOQ	<LOQ	184	µg/g	0%	< 20	
trans-Nerolidol	<LOQ	<LOQ	184	µg/g	0%	< 20	
Caryophyllene_Oxide	1040	1040	184	µg/g	0%	< 20	
Guaiol	330	329	184	µg/g	0%	< 20	
Cedrol	<LOQ	<LOQ	184	µg/g	0%	< 20	
a-Bisabolol	6780	6820	184	µg/g	1%	< 20	

Definitions

RPD Relative Percent Difference



12423 NE Whitaker Way  
 Portland, OR 97230  
 503-254-1794

**Report Number:** 23-007460/D003.R001  
**Report Date:** 07/13/2023  
**ORELAP#:** OR100028  
**Purchase Order:**  
**Received:** 06/23/23 10:32



Revision: 2 Document ID: 7087  
 Legacy ID: CFL-E33Effective:

Laboratory Quality Control Results

Residual Solvents				Batch ID: 2308992					
Method Blank				Laboratory Control Sample					
Analyte	Result	LOQ	Notes	Result	Spike	Units	% Rec	Limits	Notes
Propane	ND	< 200		632	584	µg/g	108.2	60 - 120	
Isobutane	ND	< 200		833	767	µg/g	108.6	60 - 120	
Butane	ND	< 200		831	782	µg/g	106.3	60 - 120	
2,2-Dimethylpropane	ND	< 200		1020	939	µg/g	108.6	60 - 120	
Methanol	ND	< 200		1850	1640	µg/g	112.8	60 - 120	
Ethylene Oxide	ND	< 30		73.5	57.1	µg/g	128.7	60 - 120	Q1
2-Methylbutane	ND	< 200		1670	1600	µg/g	104.4	60 - 120	
Pentane	ND	< 200		1700	1620	µg/g	104.9	60 - 120	
Ethanol	ND	< 200		1920	1610	µg/g	119.3	70 - 130	
Ethyl Ether	ND	< 200		1730	1610	µg/g	107.5	60 - 120	
2,2-Dimethylbutane	ND	< 30		177	168	µg/g	105.4	60 - 120	
Acetone	ND	< 200		1750	1620	µg/g	108.0	60 - 120	
2-Propanol	ND	< 200		1970	1600	µg/g	123.1	60 - 120	Q1
Ethyl Formate	ND	< 500		1610	1600	µg/g	100.6	70 - 130	
Acetonitrile	ND	< 100		516	484	µg/g	106.6	60 - 120	
Methyl Acetate	ND	< 500		1630	1610	µg/g	101.2	70 - 130	
2,3-Dimethylbutane	ND	< 30		177	162	µg/g	109.3	60 - 120	
Dichloromethane	ND	< 60		523	483	µg/g	108.3	60 - 120	
2-Methylpentane	ND	< 30		181	174	µg/g	104.0	60 - 120	
MTBE	ND	< 500		1610	1610	µg/g	100.0	70 - 130	
3-Methylpentane	ND	< 30		188	168	µg/g	111.9	60 - 120	
Hexane	ND	< 30		171	168	µg/g	101.8	60 - 120	
1-Propanol	ND	< 500		1790	1600	µg/g	111.9	70 - 130	
Methylethylketone	ND	< 500		1640	1620	µg/g	101.2	70 - 130	
Ethyl acetate	ND	< 200		1770	1600	µg/g	110.6	60 - 120	
2-Butanol	ND	< 200		2010	1600	µg/g	125.6	60 - 120	Q1
Tetrahydrofuran	ND	< 100		540	514	µg/g	105.1	60 - 120	
Cyclohexane	ND	< 200		1670	1600	µg/g	104.4	60 - 120	
2-methyl-1-propanol	ND	< 500		1880	1610	µg/g	116.8	70 - 130	
Benzene	ND	< 1		4.41	5.12	µg/g	86.1	60 - 120	
Isopropyl Acetate	ND	< 200		1790	1620	µg/g	110.5	60 - 120	
Heptane	ND	< 200		1700	1610	µg/g	105.6	60 - 120	
1-Butanol	ND	< 500		1870	1600	µg/g	116.9	70 - 130	
Propyl Acetate	ND	< 500		1640	1600	µg/g	102.5	70 - 130	
1,4-Dioxane	ND	< 100		509	493	µg/g	103.2	60 - 120	
2-Ethoxyethanol	ND	< 30		216	163	µg/g	132.5	60 - 120	Q1
Methylisobutylketone	ND	< 500		1680	1600	µg/g	105.0	70 - 130	
3-Methyl-1-butanol	ND	< 500		1830	1610	µg/g	113.7	70 - 130	
Ethylene Glycol	ND	< 200		473	483	µg/g	97.9	60 - 120	
Toluene	ND	< 100		508	493	µg/g	103.0	60 - 120	
Isobutyl Acetate	ND	< 500		1640	1600	µg/g	102.5	70 - 130	
1-Pentanol	ND	< 500		1970	1600	µg/g	123.1	70 - 130	
Butyl Acetate	ND	< 500		1640	1600	µg/g	102.5	70 - 130	
Ethylbenzene	ND	< 200		994	969	µg/g	102.6	60 - 120	
m,p-Xylene	ND	< 200		931	968	µg/g	96.2	60 - 120	
o-Xylene	ND	< 200		989	976	µg/g	101.3	60 - 120	
Cumene	ND	< 30		169	162	µg/g	104.3	60 - 120	
Anisole	ND	< 500		1550	1610	µg/g	96.3	70 - 130	
DMSO	ND	< 500		1450	1610	µg/g	90.1	70 - 130	
1,2-dimethoxyethane	ND	< 50		160	164	µg/g	97.6	70 - 130	
Triethylamine	ND	< 500		1470	1600	µg/g	91.9	70 - 130	
N,N-dimethylformamide	ND	< 150		513	484	µg/g	106.0	70 - 130	
N,N-dimethylacetamide	ND	< 150		478	489	µg/g	97.8	70 - 130	
Pyridine	ND	< 50		149	172	µg/g	86.6	70 - 130	
Sulfone	ND	< 50		127	163	µg/g	77.9	70 - 130	
1,2-Dichloroethane	ND	< 1		1.07	1	µg/g	107.0	70 - 130	
Chloroform	ND	< 1		1.12	1	µg/g	112.0	70 - 130	
Trichloroethylene	ND	< 1		1.07	1	µg/g	107.0	70 - 130	
1,1-Dichloroethane	ND	< 1		1.03	1	µg/g	103.0	70 - 130	



12423 NE Whitaker Way  
Portland, OR 97230  
503-254-1794



**Report Number:** 23-007460/D003.R001  
**Report Date:** 07/13/2023  
**ORELAP#:** OR100028  
**Purchase Order:**  
**Received:** 06/23/23 10:32

Revision: 2 Document ID: 7087  
Legacy ID: CFL-E33Effective:

QC - Sample Duplicate		Sample ID: 23-007460-0001						
Analyte	Result	Org. Result	LOQ	Units	RPD	Limits	Accept/Fail	Notes
Propane	ND	ND	200	µg/g	0.0	< 20	Acceptable	
Isobutane	ND	ND	200	µg/g	0.0	< 20	Acceptable	
Butane	ND	ND	200	µg/g	0.0	< 20	Acceptable	
2,2-Dimethylpropane	ND	ND	200	µg/g	0.0	< 20	Acceptable	
Methanol	ND	ND	200	µg/g	0.0	< 20	Acceptable	
Ethylene Oxide	ND	ND	30	µg/g	0.0	< 20	Acceptable	
2-Methylbutane	ND	ND	200	µg/g	0.0	< 20	Acceptable	
Pentane	ND	ND	200	µg/g	0.0	< 20	Acceptable	
Ethanol	ND	ND	200	µg/g	0.0	< 20	Acceptable	
Ethyl Ether	ND	ND	200	µg/g	0.0	< 20	Acceptable	
2,2-Dimethylbutane	ND	ND	30	µg/g	0.0	< 20	Acceptable	
Acetone	ND	ND	200	µg/g	0.0	< 20	Acceptable	
2-Propanol	ND	ND	200	µg/g	0.0	< 20	Acceptable	
Ethyl Formate	ND	ND	500	µg/g	0.0	< 20	Acceptable	
Acetonitrile	ND	ND	100	µg/g	0.0	< 20	Acceptable	
Methyl Acetate	ND	ND	500	µg/g	0.0	< 20	Acceptable	
2,3-Dimethylbutane	ND	ND	30	µg/g	0.0	< 20	Acceptable	
Dichloromethane	ND	ND	60	µg/g	0.0	< 20	Acceptable	
2-Methylpentane	ND	ND	30	µg/g	0.0	< 20	Acceptable	
MTBE	ND	ND	500	µg/g	0.0	< 20	Acceptable	
3-Methylpentane	ND	ND	30	µg/g	0.0	< 20	Acceptable	
Hexane	ND	ND	30	µg/g	0.0	< 20	Acceptable	
1-Propanol	ND	ND	500	µg/g	0.0	< 20	Acceptable	
Methyl ethyl ketone	ND	ND	500	µg/g	0.0	< 20	Acceptable	
Ethyl acetate	ND	ND	200	µg/g	0.0	< 20	Acceptable	
2-Butanol	ND	ND	200	µg/g	0.0	< 20	Acceptable	
Tetrahydrofuran	ND	ND	100	µg/g	0.0	< 20	Acceptable	
Cyclohexane	ND	ND	200	µg/g	0.0	< 20	Acceptable	
2-methyl-1-propanol	ND	ND	500	µg/g	0.0	< 20	Acceptable	
Benzene	ND	ND	1	µg/g	0.0	< 20	Acceptable	
Isopropyl Acetate	ND	ND	200	µg/g	0.0	< 20	Acceptable	
Heptane	ND	ND	200	µg/g	0.0	< 20	Acceptable	
1-Butanol	ND	ND	500	µg/g	0.0	< 20	Acceptable	
Propyl Acetate	ND	ND	500	µg/g	0.0	< 20	Acceptable	
1,4-Dioxane	ND	ND	100	µg/g	0.0	< 20	Acceptable	
2-Ethoxyethanol	ND	ND	30	µg/g	0.0	< 20	Acceptable	
Methylisobutylketone	ND	ND	500	µg/g	0.0	< 20	Acceptable	
3-Methyl-1-butanol	ND	ND	500	µg/g	0.0	< 20	Acceptable	
Ethylene Glycol	ND	ND	200	µg/g	0.0	< 20	Acceptable	
Toluene	ND	ND	100	µg/g	0.0	< 20	Acceptable	
Isobutyl Acetate	ND	ND	500	µg/g	0.0	< 20	Acceptable	
1-Pentanol	ND	ND	500	µg/g	0.0	< 20	Acceptable	
Butyl Acetate	ND	ND	500	µg/g	0.0	< 20	Acceptable	
Ethylbenzene	ND	ND	200	µg/g	0.0	< 20	Acceptable	
m,p-Xylene	ND	ND	200	µg/g	0.0	< 20	Acceptable	
o-Xylene	ND	ND	200	µg/g	0.0	< 20	Acceptable	
Cumene	ND	ND	30	µg/g	0.0	< 20	Acceptable	
Anisole	ND	ND	500	µg/g	0.0	< 20	Acceptable	
DMSO	ND	ND	500	µg/g	0.0	< 20	Acceptable	
1,2-dimethoxyethane	ND	ND	50	µg/g	0.0	< 20	Acceptable	
Triethylamine	ND	ND	500	µg/g	0.0	< 20	Acceptable	
N,N-dimethylformamide	ND	ND	150	µg/g	0.0	< 20	Acceptable	
N,N-dimethylacetamide	ND	ND	150	µg/g	0.0	< 20	Acceptable	
Pyridine	ND	ND	50	µg/g	0.0	< 20	Acceptable	
Sulfolane	ND	ND	50	µg/g	0.0	< 20	Acceptable	
1,2-Dichloroethane	ND	ND	1	µg/g	0.0	< 20	Acceptable	
Chloroform	ND	ND	1	µg/g	0.0	< 20	Acceptable	
Trichloroethylene	ND	ND	1	µg/g	0.0	< 20	Acceptable	
1,1-Dichloroethane	ND	ND	1	µg/g	0.0	< 20	Acceptable	

**Abbreviations**

ND - None Detected at or above MRL  
RPD - Relative Percent Difference  
LOQ - Limit of Quantitation  
Q1 - Quality control result biased high. Only non-detect samples reported.

**Units of Measure:**

µg/g - Microgram per gram or ppm



12423 NE Whitaker Way  
 Portland, OR 97230  
 503-254-1794



**Report Number:** 23-007460/D003.R001  
**Report Date:** 07/13/2023  
**ORELAP#:** OR100028  
**Purchase Order:**  
**Received:** 06/23/23 10:32

Revision: 3 Document ID: 3120  
 Legacy ID: CFL-C21 Worksheet Validated 10/30/2020

**Laboratory Pesticide Quality Control Results**

AOAC 2007.1 & EN 15662		Units: mg/Kg			Batch ID: 2308994			
Method Blank		Laboratory Control Sample						
Analyte	Blank Result	Blank Limits	Notes	LCS Result	LCS Spike	LCS % Rec	Limits	Notes
Abamectin	0.000	< 0.250		1.059	1.000	105.9	50.0	150
Acephate	0.083	< 0.200		0.650	0.800	81.2	60.0	120
Acetaminocyl	0.000	< 1.000		3.936	4.000	98.4	40.0	160
Acetamiprid	0.000	< 0.100		0.396	0.400	99.0	60.0	120
Aldicarb	0.000	< 0.200		0.809	0.800	101.1	60.0	120
Azoxystrobin	0.000	< 0.100		0.384	0.400	96.1	60.0	120
Bifenazate	0.000	< 0.100		0.434	0.400	108.4	60.0	120
Bifenthrin	0.000	< 0.100		0.375	0.400	93.6	50.0	150
Boscalid	0.000	< 0.200		0.806	0.800	100.8	60.0	120
Carbaryl	0.000	< 0.100		0.371	0.400	92.6	60.0	120
Carbofuran	0.000	< 0.100		0.391	0.400	97.8	60.0	120
Chlorantraniliprole	0.000	< 0.100		0.383	0.400	95.8	60.0	120
Chlorfenapyr	0.000	< 0.500		2.104	2.000	105.2	60.0	120
Chlorpyrifos	0.000	< 0.100		0.349	0.400	87.4	60.0	120
Clofentazine	0.000	< 0.100		0.375	0.400	93.6	60.0	120
Cyfluthrin	0.000	< 0.500		2.056	2.000	102.8	50.0	150
Cypermethrin	0.000	< 0.500		1.907	2.000	95.4	50.0	150
Daminozide	0.128	< 0.500		2.088	2.000	104.4	60.0	120
Diazinon	0.000	< 0.100		0.420	0.400	105.1	60.0	120
Dichlorvos	0.000	< 0.500		1.803	2.000	90.2	60.0	120
Dimethoate	0.000	< 0.100		0.410	0.400	102.5	60.0	120
Ethoprophos	0.000	< 0.100		0.383	0.400	95.8	60.0	120
Etofenprox	0.000	< 0.200		0.785	0.800	98.2	50.0	150
Etoxazole	0.000	< 0.100		0.397	0.400	99.3	60.0	120
Fenoxycarb	0.000	< 0.100		0.398	0.400	99.5	60.0	120
Fenpyroximate	0.000	< 0.200		0.784	0.800	98.0	60.0	120
Fipronil	0.000	< 0.200		0.768	0.800	96.1	60.0	120
Fonicamid	0.000	< 0.250		1.021	1.000	102.1	60.0	120
Fludioxonil	0.000	< 0.200		0.755	0.800	94.4	50.0	150
Hexythiazox	0.000	< 0.250		0.952	1.000	95.2	60.0	120
Imazalil	0.000	< 0.100		0.396	0.400	99.0	60.0	120
Imidacloprid	0.000	< 0.200		0.828	0.800	103.5	60.0	120
Kresoxim-methyl	0.000	< 0.200		0.862	0.800	107.8	60.0	120
Malathion	0.000	< 0.100		0.403	0.400	100.7	60.0	120
Metaxalyl	0.000	< 0.100		0.396	0.400	99.1	60.0	120
Methiocarb	0.000	< 0.100		0.389	0.400	97.2	60.0	120
Methomyl	0.000	< 0.200		0.790	0.800	98.8	60.0	120
MGK-264	0.000	< 0.100		0.409	0.400	102.3	50.0	150
Myclobutanil	0.000	< 0.100		0.406	0.400	101.5	60.0	120
Naled	0.000	< 0.250		0.943	1.000	94.3	50.0	150
Oxamyl	0.000	< 0.500		1.998	2.000	99.9	60.0	120
Paclbutrazole	0.000	< 0.200		0.786	0.800	98.2	60.0	120
Parathion-Methyl	0.000	< 0.100		0.369	0.400	92.3	50.0	150
Permethrin	0.000	< 0.100		0.386	0.400	96.4	50.0	150
Phosmet	0.000	< 0.100		0.395	0.400	98.8	50.0	150
Piperonyl butoxide	0.000	< 0.500		2.138	2.000	106.9	60.0	120
Prallethrin	0.000	< 0.100		0.389	0.400	97.3	60.0	120
Propiconazole	0.000	< 0.200		0.779	0.800	97.4	60.0	120
Propoxur	0.000	< 0.100		0.368	0.400	92.1	60.0	120
Pyrethrin (Summe)	0.003	< 0.100		0.518	0.488	106.2	60.0	120
Pyridaben	0.000	< 0.100		0.388	0.400	97.0	50.0	150
Spirosad	0.000	< 0.100		0.387	0.388	99.8	50.0	150
Spiromesifen	0.000	< 0.100		0.383	0.400	95.7	60.0	120
Spirotetramat	0.000	< 0.100		0.381	0.400	95.3	60.0	120
Spiroxamine	0.000	< 0.200		0.769	0.800	96.1	60.0	120
Tebuconazole	0.000	< 0.200		0.800	0.800	99.9	60.0	120
Thiacloprid	0.000	< 0.100		0.392	0.400	98.0	60.0	120
Thiamethoxam	0.000	< 0.100		0.378	0.400	94.4	60.0	120
Trifloxystrobin	0.000	< 0.100		0.386	0.400	96.5	60.0	120



12423 NE Whitaker Way  
Portland, OR 97230  
503-254-1794



**Report Number:** 23-007460/D003.R001  
**Report Date:** 07/13/2023  
**ORELAP#:** OR100028  
**Purchase Order:**  
**Received:** 06/23/23 10:32

Revision: 3 Document ID: 3120  
Legacy ID: CFL-C21 Worksheet Validated 10/30/2020

**Laboratory Pesticide Quality Control Results**

AOAC 2007.1 & EN 15662		Units: mg/Kg				Batch ID: 2308994				
Matrix Spike/Matrix Spike Duplicate Recoveries					Sample ID: 23-007460-0001					
Analyte	Result	MS Res	MSD Res	Spike	RPD%	Limit	MS % Rec	MSD % Rec	Limits	Notes
Abamectin	0.000	0.873	1.053	1.000	18.7%	< 30	87.3%	105.3%	50 - 150	
Acephate	0.000	0.645	0.674	0.800	4.4%	< 30	80.7%	84.3%	50 - 150	
Acetamiprid	0.000	0.385	0.398	0.400	3.5%	< 30	96.1%	99.5%	50 - 150	
Aldicarb	0.000	0.780	0.869	0.800	10.8%	< 30	97.5%	108.6%	50 - 150	
Azoxystrobin	0.000	0.358	0.356	0.400	0.4%	< 30	89.4%	89.1%	50 - 150	
Bifenazate	0.000	0.430	0.448	0.400	4.0%	< 30	107.6%	111.9%	50 - 150	
Bifenthrin	0.000	0.369	0.386	0.400	4.5%	< 30	92.3%	96.6%	50 - 150	
Boscalid	0.000	0.741	0.783	0.800	5.6%	< 30	92.6%	97.9%	50 - 150	
Carbaryl	0.000	0.348	0.361	0.400	3.5%	< 30	87.1%	90.1%	50 - 150	
Carbofuran	0.000	0.388	0.399	0.400	2.7%	< 30	97.1%	99.8%	50 - 150	
Chlorantraniliprole	0.000	0.411	0.441	0.400	7.0%	< 30	102.7%	110.2%	50 - 150	
Chlorfenapyr	0.000	1.803	1.979	2.000	9.3%	< 30	90.2%	99.0%	50 - 150	
Chlorpyrifos	0.000	0.354	0.332	0.400	6.3%	< 30	88.5%	83.1%	50 - 150	
Clofentezine	0.000	0.283	0.294	0.400	3.6%	< 30	70.8%	73.4%	50 - 150	
Cyfluthrin	0.000	1.081	1.308	2.000	18.9%	< 30	54.1%	65.4%	30 - 150	
Cypermethrin	0.000	1.098	1.110	2.000	1.1%	< 30	54.9%	55.5%	50 - 150	
Daminozide	0.000	2.159	2.555	2.000	16.8%	< 30	107.9%	127.8%	30 - 150	
Diazinon	0.000	0.342	0.387	0.400	12.2%	< 30	85.6%	96.7%	50 - 150	
Dichlorvos	0.000	1.756	1.840	2.000	4.6%	< 30	87.8%	92.0%	50 - 150	
Dimethoate	0.000	0.401	0.417	0.400	3.7%	< 30	100.3%	104.2%	50 - 150	
Ethoprophos	0.000	0.346	0.367	0.400	5.9%	< 30	86.5%	91.7%	50 - 150	
Etofenprox	0.000	0.765	0.764	0.800	0.1%	< 30	95.6%	95.5%	50 - 150	
Etoxazole	0.000	0.402	0.383	0.400	4.8%	< 30	100.5%	95.8%	50 - 150	
Fenoxycarb	0.000	0.347	0.383	0.400	10.0%	< 30	86.7%	95.8%	50 - 150	
Fenpyroximate	0.000	0.423	0.429	0.800	1.4%	< 30	52.8%	53.6%	50 - 150	
Fipronil	0.000	0.458	0.487	0.800	6.1%	< 30	57.3%	60.9%	50 - 150	
Flonicamid	0.000	0.966	0.910	1.000	6.0%	< 30	96.6%	91.0%	50 - 150	
Fludioxonil	0.000	0.873	0.858	0.800	1.7%	< 30	109.1%	107.2%	50 - 150	
Hexythiazox	0.000	1.130	1.109	1.000	1.9%	< 30	113.0%	110.9%	50 - 150	
Imazalil	0.001	0.378	0.411	0.400	8.2%	< 30	94.4%	102.5%	50 - 150	
Imidacloprid	0.007	0.804	0.855	0.800	6.2%	< 30	99.7%	106.1%	50 - 150	
Kresoxim-methyl	0.000	0.677	0.796	0.800	16.2%	< 30	84.6%	99.5%	50 - 150	
Malathion	0.000	0.365	0.401	0.400	9.5%	< 30	91.1%	100.2%	50 - 150	
Metaxalyl	0.000	0.408	0.457	0.400	11.2%	< 30	102.1%	114.2%	50 - 150	
Methiocarb	0.000	0.378	0.423	0.400	11.2%	< 30	94.5%	105.7%	50 - 150	
Methomyl	0.000	0.809	0.765	0.800	5.7%	< 30	101.2%	95.6%	50 - 150	
MGK-264	0.000	0.211	0.248	0.400	16.1%	< 30	52.8%	62.0%	50 - 150	
Myclobutanil	0.000	0.296	0.321	0.400	8.4%	< 30	73.9%	80.3%	50 - 150	
Naled	0.000	0.851	0.896	1.000	5.1%	< 30	85.1%	89.6%	50 - 150	
Oxamyl	0.000	1.864	1.970	2.000	5.5%	< 30	93.2%	98.5%	50 - 150	
Paclobutrazole	0.000	0.739	0.815	0.800	9.7%	< 30	92.4%	101.9%	50 - 150	
Parathion-Methyl	0.000	0.329	0.261	0.400	23.1%	< 30	82.3%	65.2%	30 - 150	
Permethrin	0.000	0.341	0.345	0.400	0.9%	< 30	85.4%	86.2%	50 - 150	
Phosmet	0.000	0.387	0.429	0.400	10.4%	< 30	96.7%	107.4%	50 - 150	
Piperonyl butoxide	0.000	2.035	2.267	2.000	10.8%	< 30	101.8%	113.3%	50 - 150	
Prallethrin	0.292	0.730	0.845	0.400	23.1%	< 30	109.6%	138.3%	50 - 150	
Propiconazole	0.000	0.604	0.658	0.800	8.5%	< 30	75.5%	82.2%	50 - 150	
Propoxur	0.000	0.363	0.390	0.400	7.1%	< 30	90.9%	97.6%	50 - 150	
Pyrethrin (Summe)	0.000	2.253	2.455	0.488	8.6%	< 30	461.7%	503.0%	50 - 150	
Pyridaben	0.000	0.409	0.424	0.400	3.5%	< 30	102.3%	106.0%	50 - 150	
Spinosad	0.000	0.344	0.349	0.388	1.6%	< 30	88.6%	90.0%	50 - 150	
Spiromesifen	0.000	0.407	0.392	0.400	3.7%	< 30	101.8%	98.0%	50 - 150	
Spirotetramat	0.000	0.430	0.441	0.400	2.4%	< 30	107.6%	110.2%	50 - 150	
Spiroxamine	0.000	0.766	0.881	0.800	13.9%	< 30	95.8%	110.1%	50 - 150	
Tebuconazole	0.000	0.656	0.645	0.800	1.5%	< 30	81.9%	80.7%	50 - 150	
Thiacloprid	0.000	0.368	0.395	0.400	7.0%	< 30	92.1%	98.8%	50 - 150	
Thiamethoxam	0.000	0.401	0.433	0.400	7.6%	< 30	100.3%	108.3%	50 - 150	
Trifloxystrobin	0.000	0.359	0.376	0.400	4.4%	< 30	89.9%	93.9%	50 - 150	



12423 NE Whitaker Way  
Portland, OR 97230  
503-254-1794



**Report Number:** 23-007460/D003.R001  
**Report Date:** 07/13/2023  
**ORELAP#:** OR100028  
**Purchase Order:**  
**Received:** 06/23/23 10:32





Explanation of QC Flag Comments:

Code	Explanation
Q	Matrix interferences affecting spike or surrogate recoveries.
Q1	Quality control result biased high. Only non-detect samples reported.
Q2	Quality control outside QC limits. Data considered estimate.
Q3	Sample concentration greater than four times the amount spiked.
Q4	Non-homogenous sample matrix, affecting RPD result and/or % recoveries.
Q5	Spike results above calibration curve.
Q6	Quality control outside QC limits. Data acceptable based on remaining QC.
R	Relative percent difference (RPD) outside control limit.
R1	RPD non-calculable, as sample or duplicate results are less than five times the LOQ.
R2	Sample replicates RPD non-calculable, as only one replicate is within the analytical range.
LOQ1	Quantitation level raised due to low sample volume and/or dilution.
LOQ2	Quantitation level raised due to matrix interference.
B	Analyte detected in method blank, but not in associated samples.
B1	The sample concentration is greater than 5 times the blank concentration.
B2	The sample concentration is less than 5 times the blank concentration.